

APPENDIX 1

**Time Series of Meteorological and Wind Data for the
Four Winter Reference Periods**

Relative Humidity

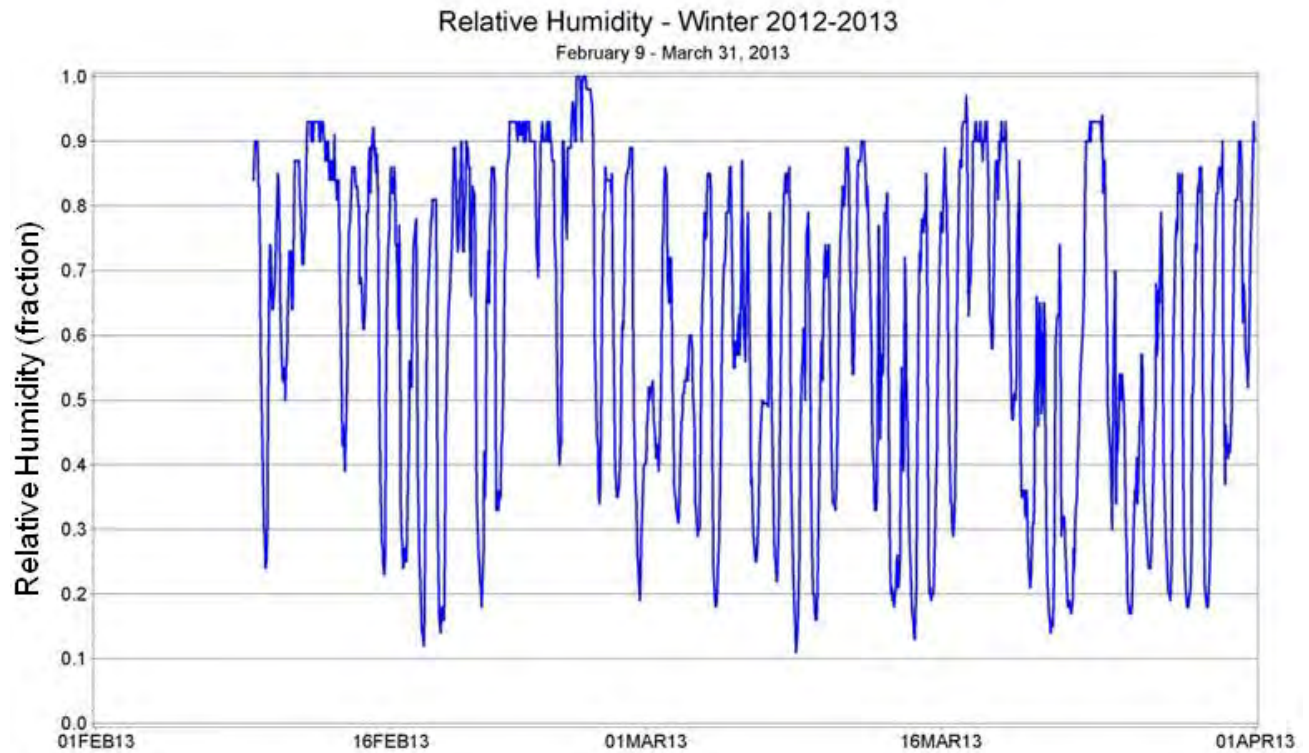


Figure A1. Relative humidity from Tallahassee NWS site February 9 - March 31, 2013.

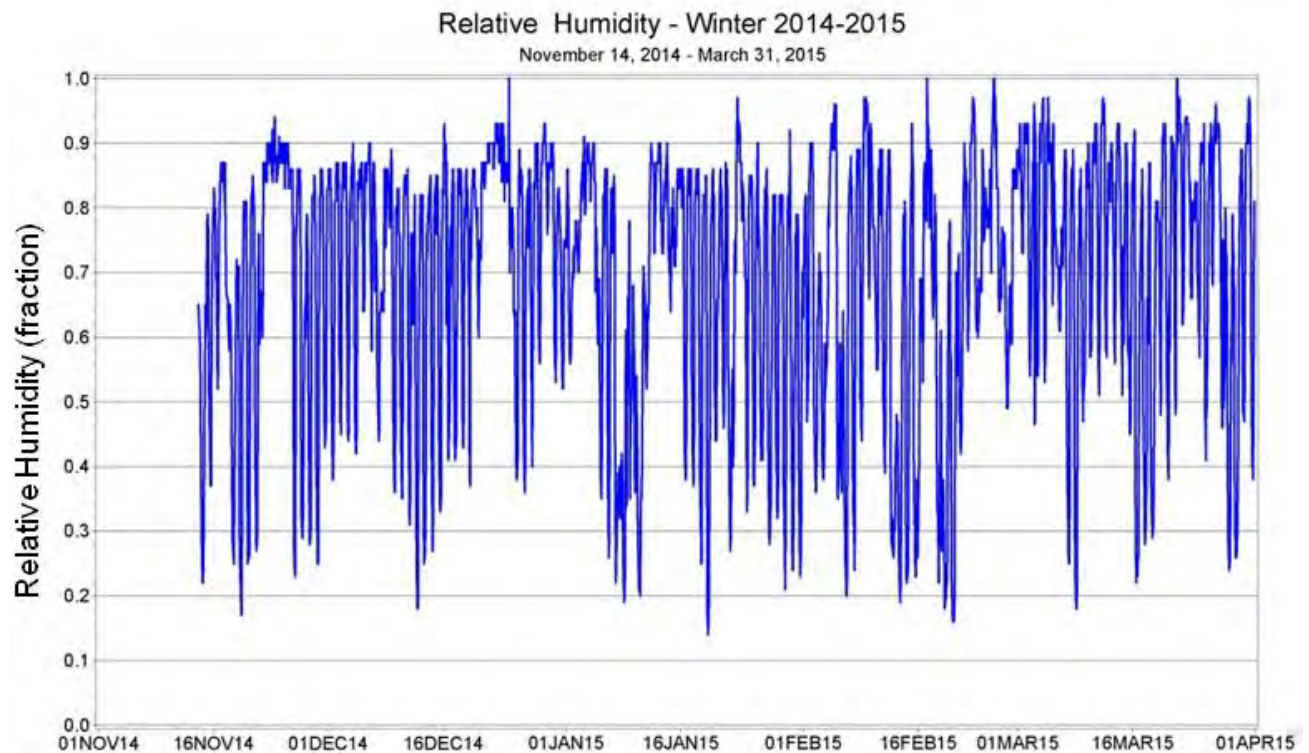


Figure A2. Relative humidity from Tallahassee NWS site November 14, 2014 - March 31, 2015.

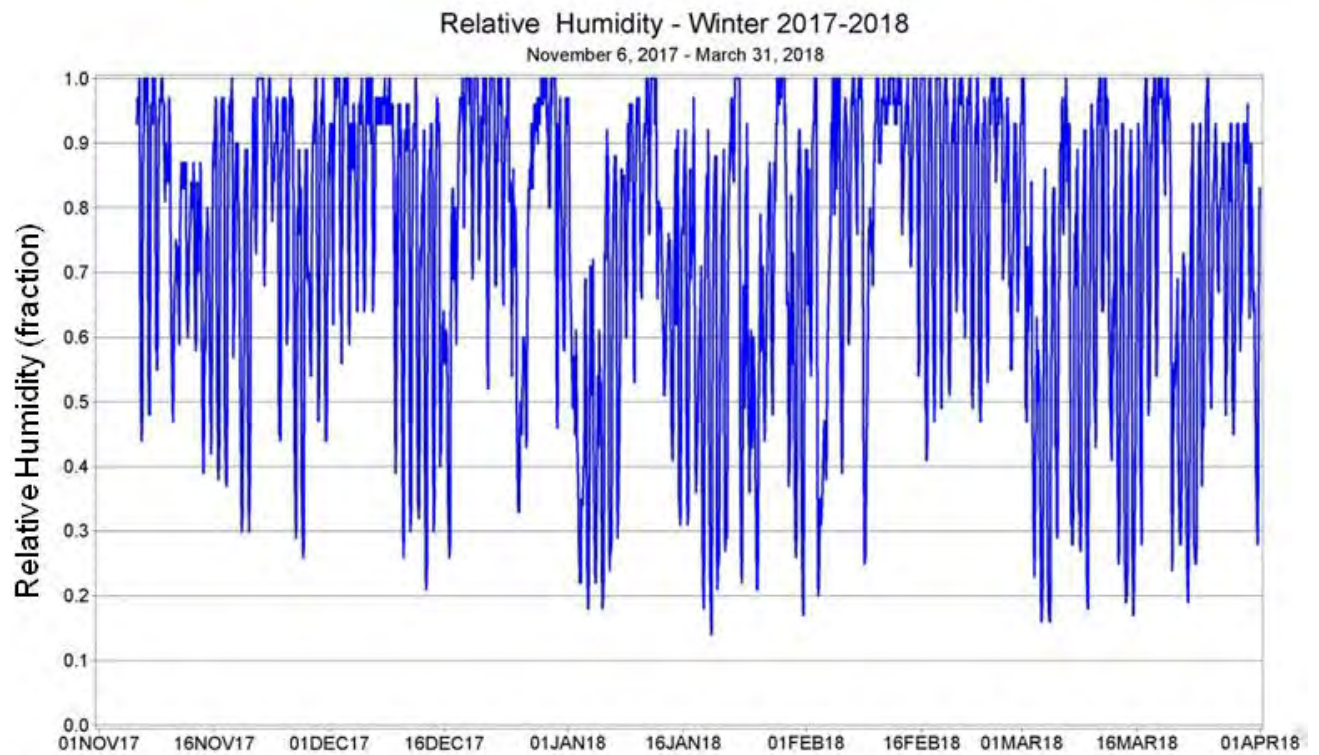


Figure A3. Relative humidity from Tallahassee NWS site November 6, 2017 - March 31, 2018.

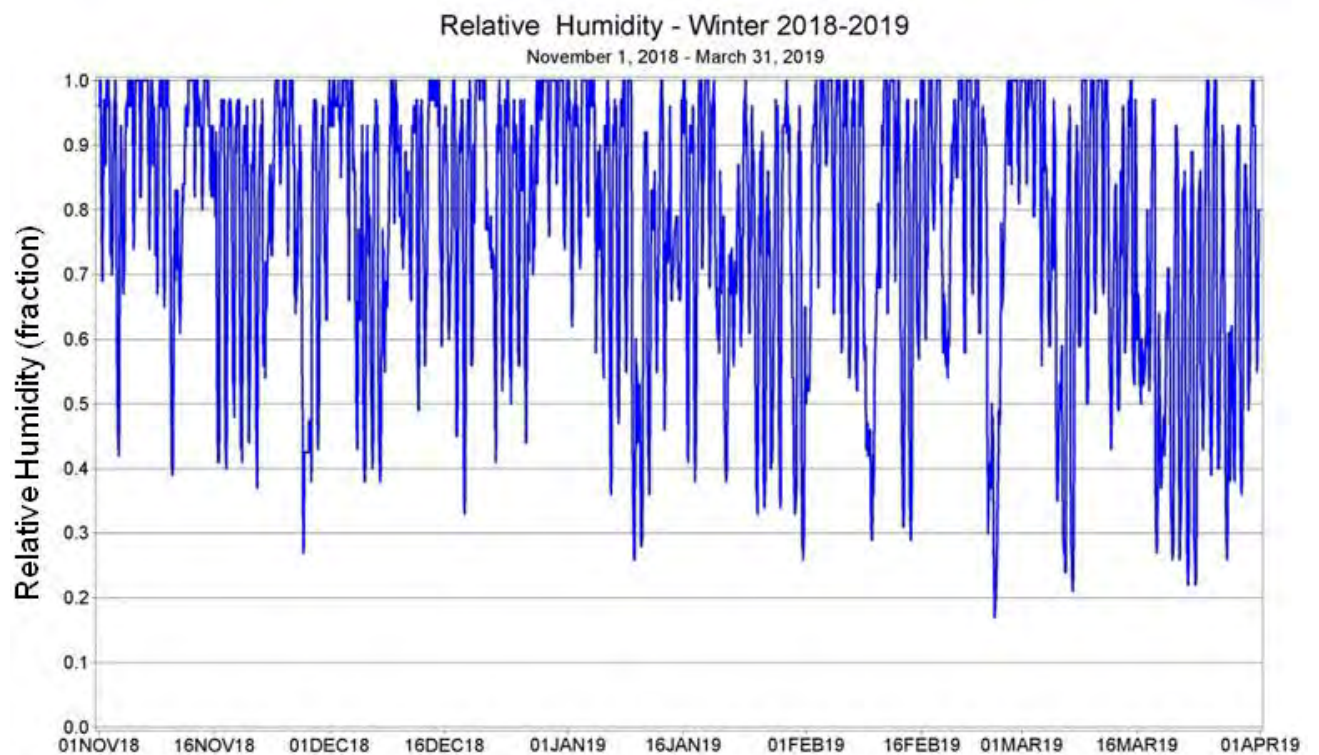


Figure A4. Relative humidity from Tallahassee NWS site November 1, 2018 - March 31, 2019.

Atmospheric Pressure

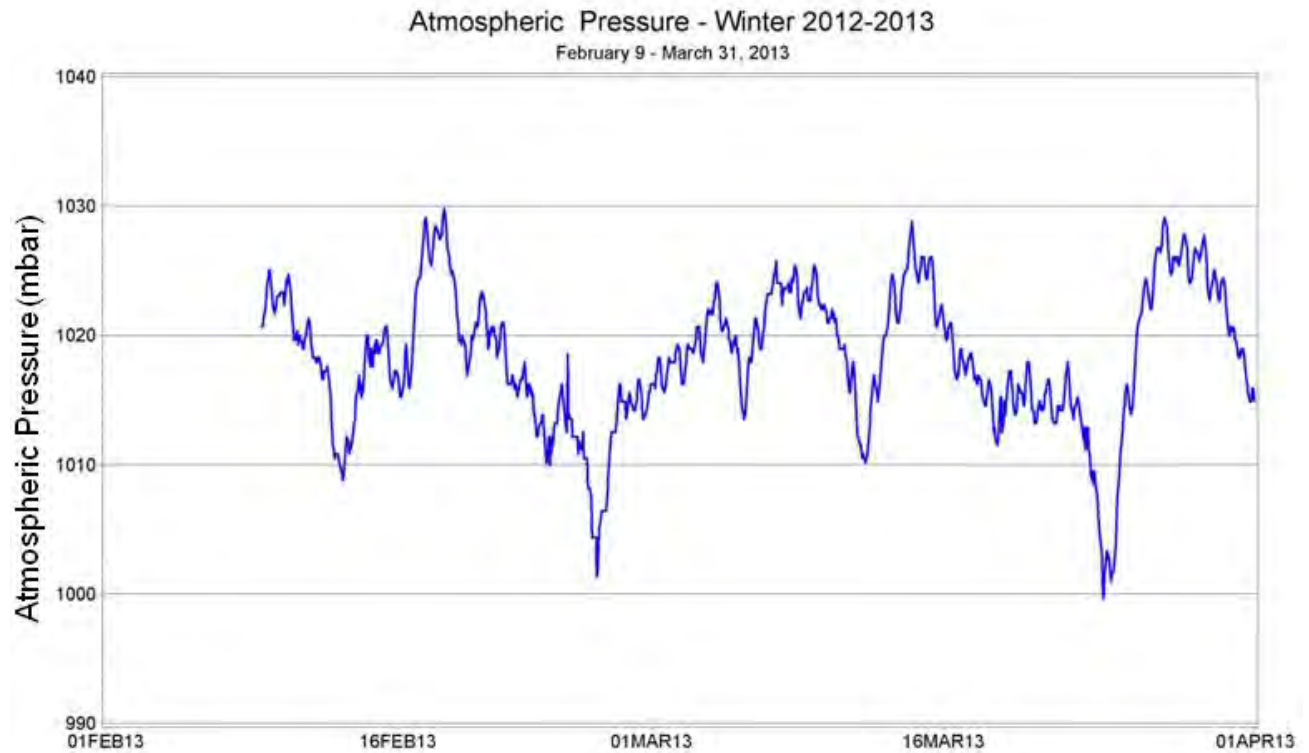


Figure A5. Atmospheric pressure from Tallahassee NWS site February 9 - March 31, 2013.

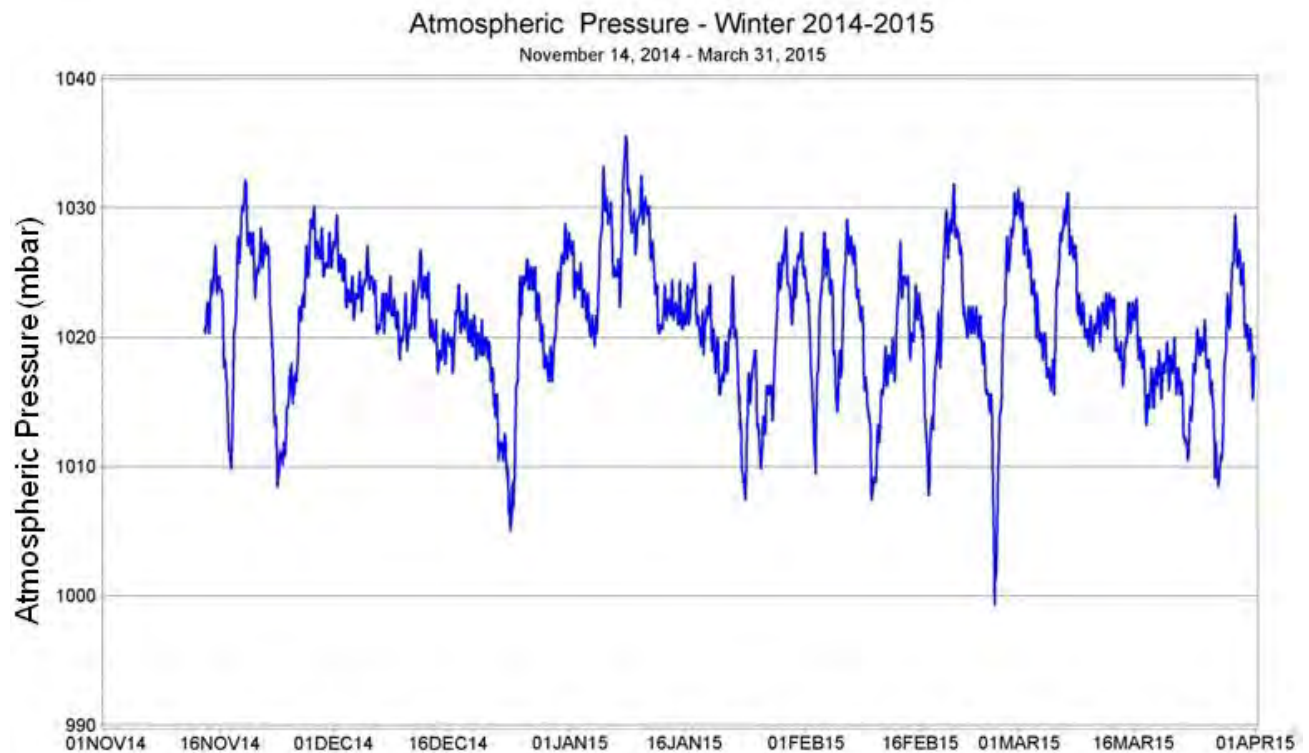


Figure A6. Atmospheric pressure from Tallahassee NWS site November 14, 2014 - March 31, 2015.

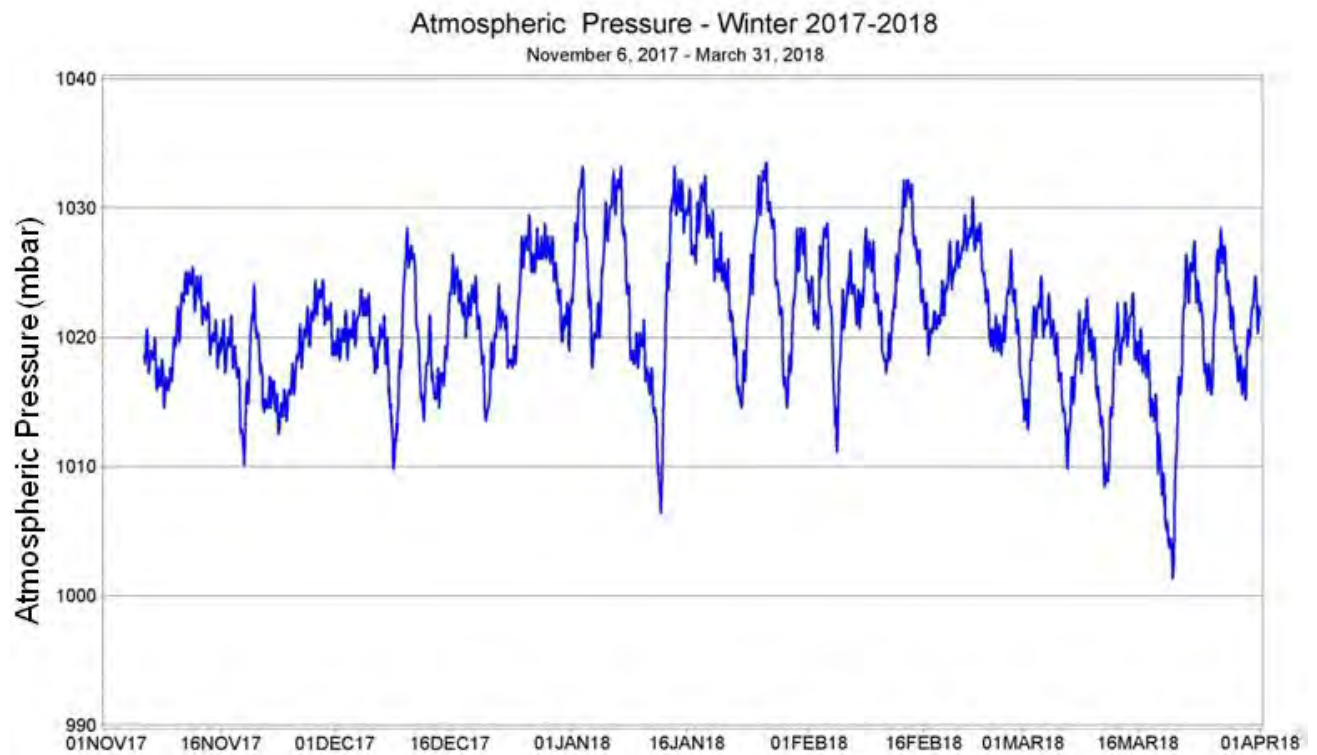


Figure A7. Atmospheric pressures from Tallahassee NWS site November 6, 2017 - March 31, 2018.

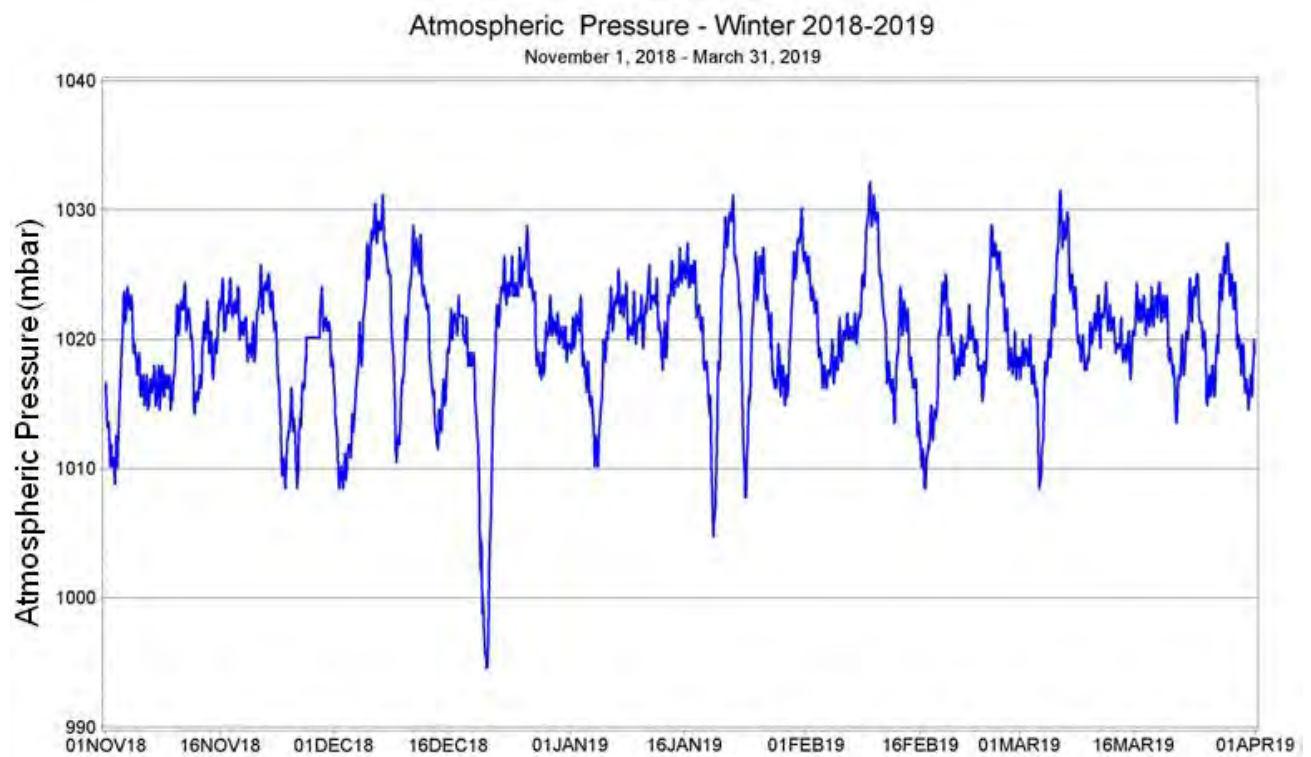


Figure A8. Atmospheric pressure from Tallahassee NWS site November 1, 2018 - March 31, 2019.

Air Temperature

Air Temperature - Winter 2012-2013

February 9 - March 31, 2013

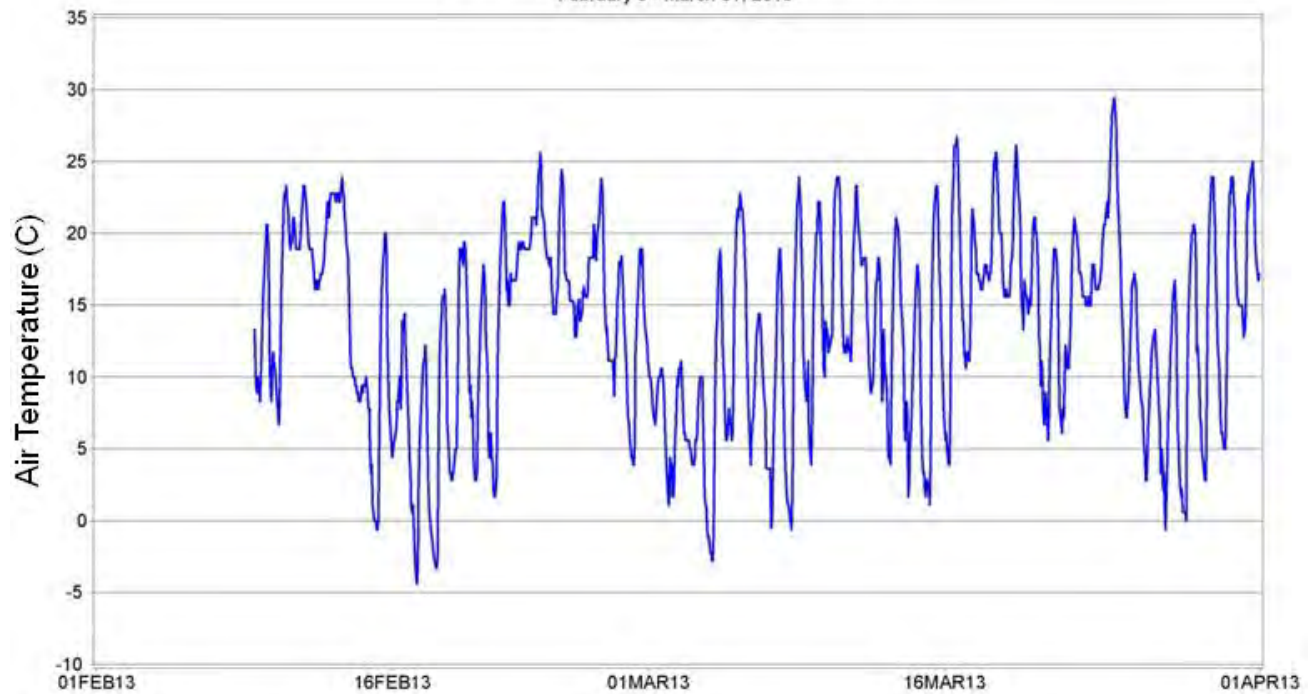


Figure A9. Air temperature from Tallahassee NWS site February 9 - March 31, 2013.

Air Temperature - Winter 2014-2015

November 14, 2014 - March 31, 2015

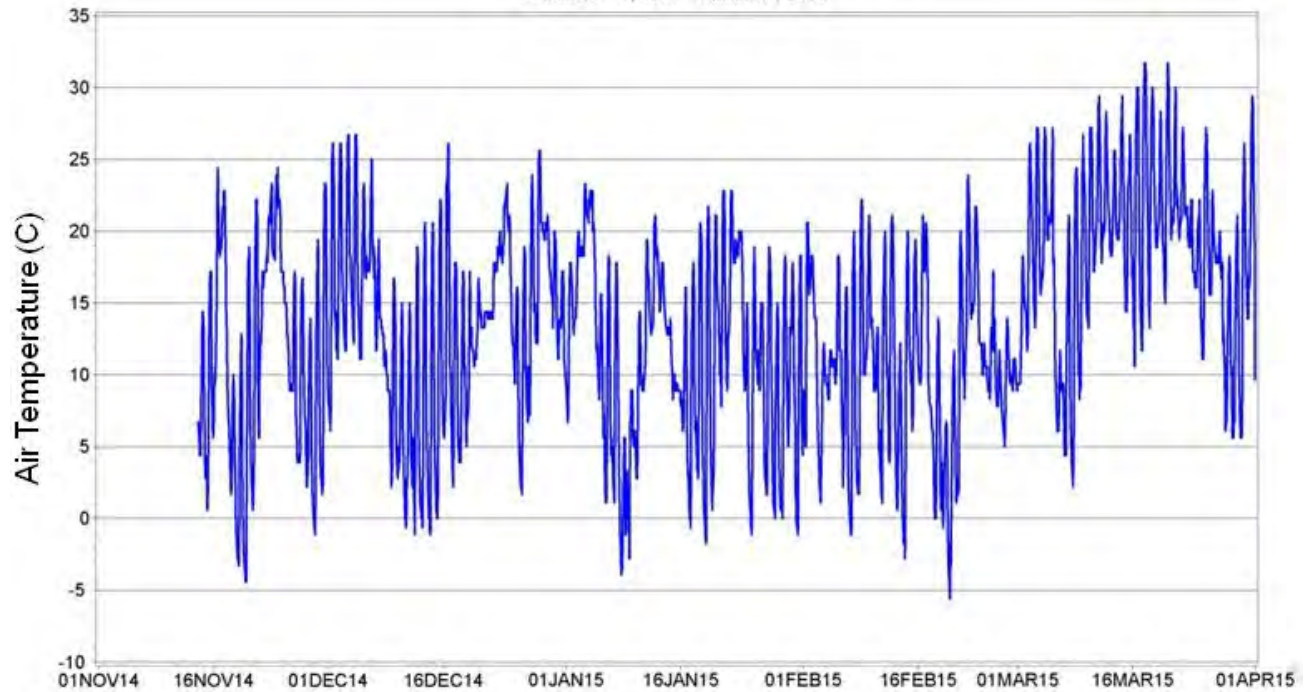


Figure A10. Air temperature from Tallahassee NWS site November 14, 2014 - March 31, 2015.

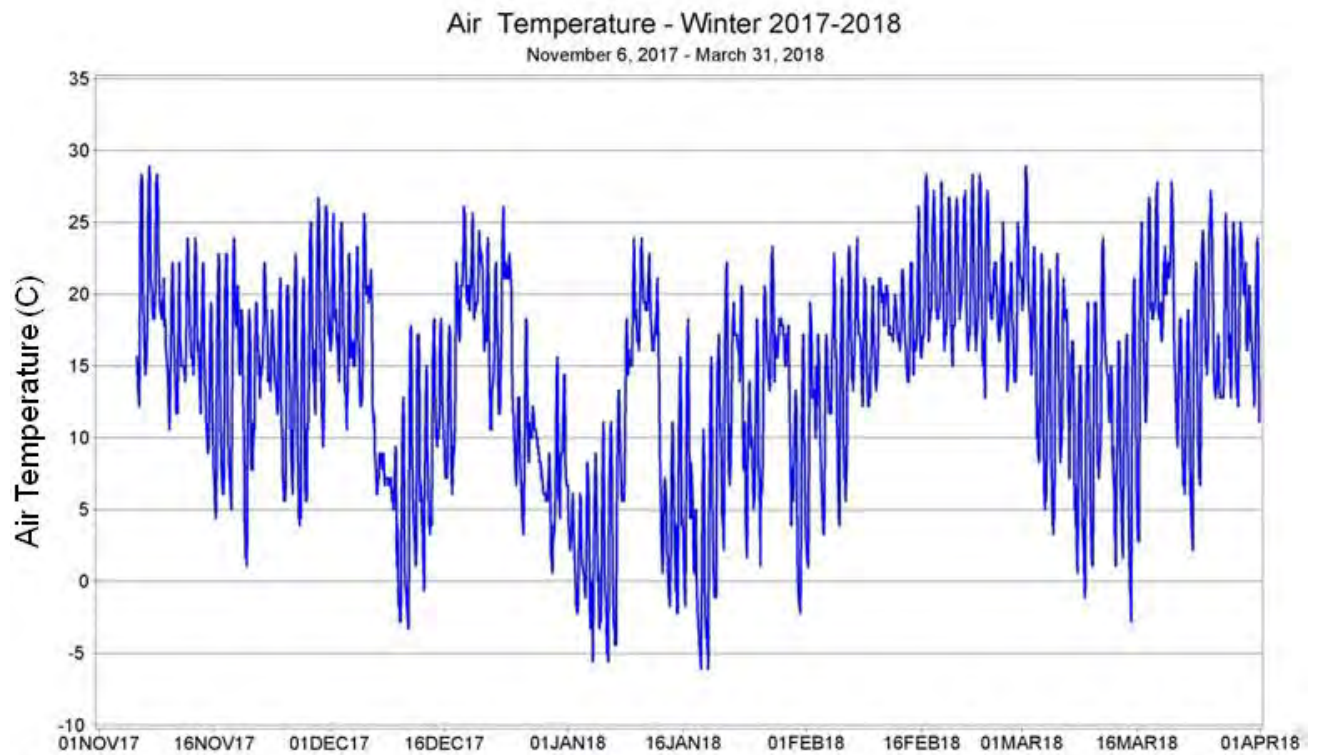


Figure A11. Air temperature from Tallahassee NWS site November 6, 2017 - March 31, 2018.

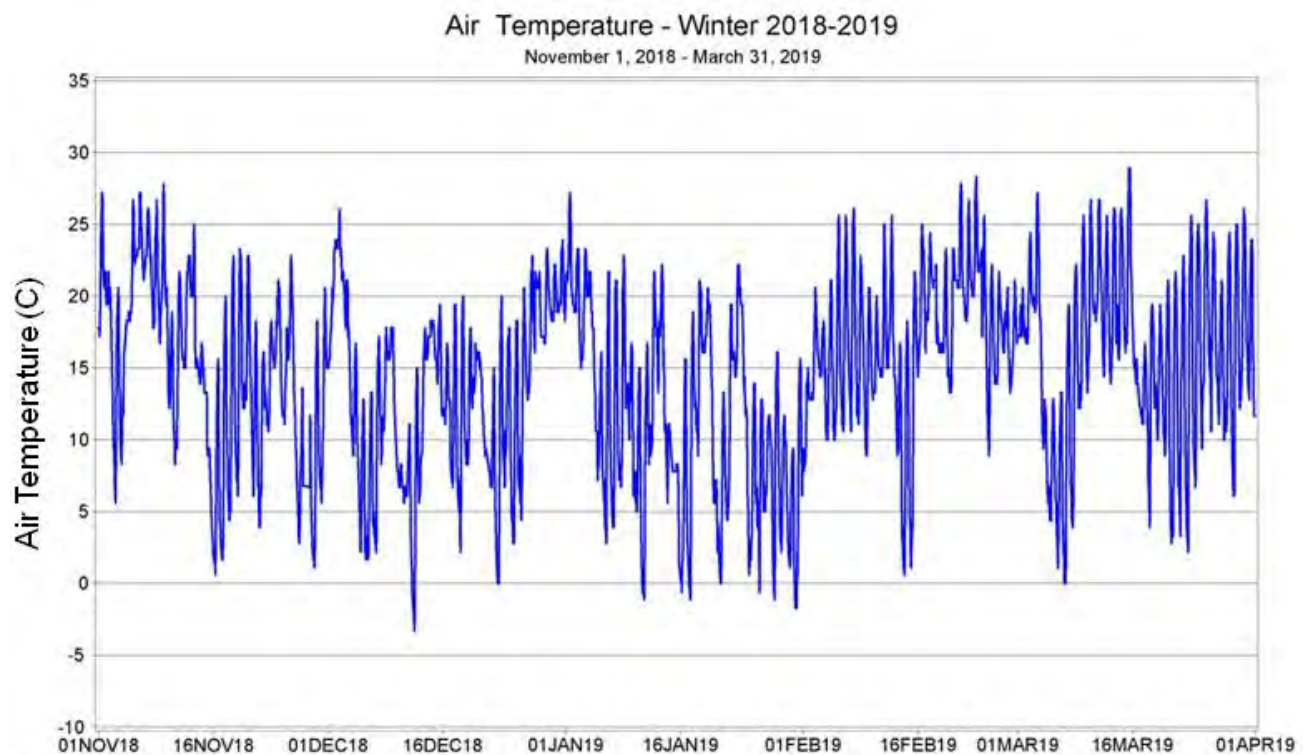


Figure A12. Air temperature from Tallahassee NWS site November 1, 2018 - March 31, 2019.

Cloud Cover

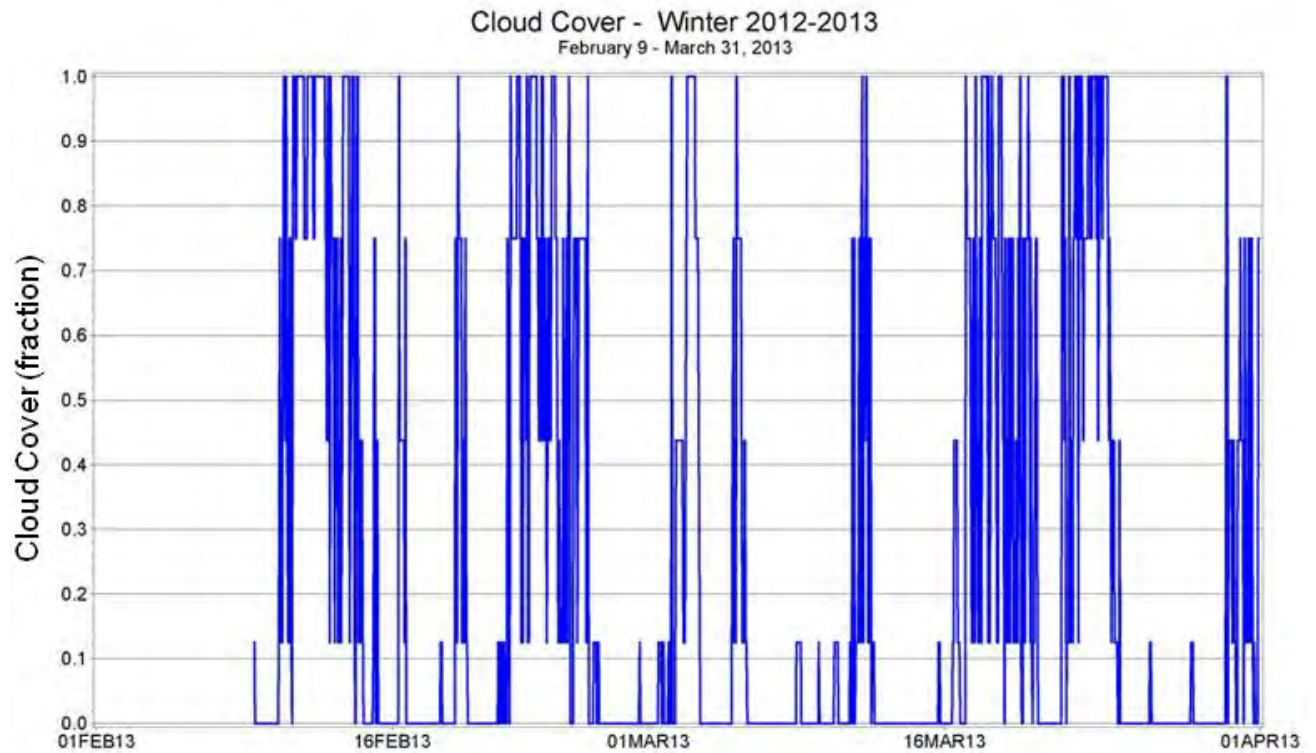


Figure A13. Cloud cover from Tallahassee NWS site February 9 - March 31, 2013.

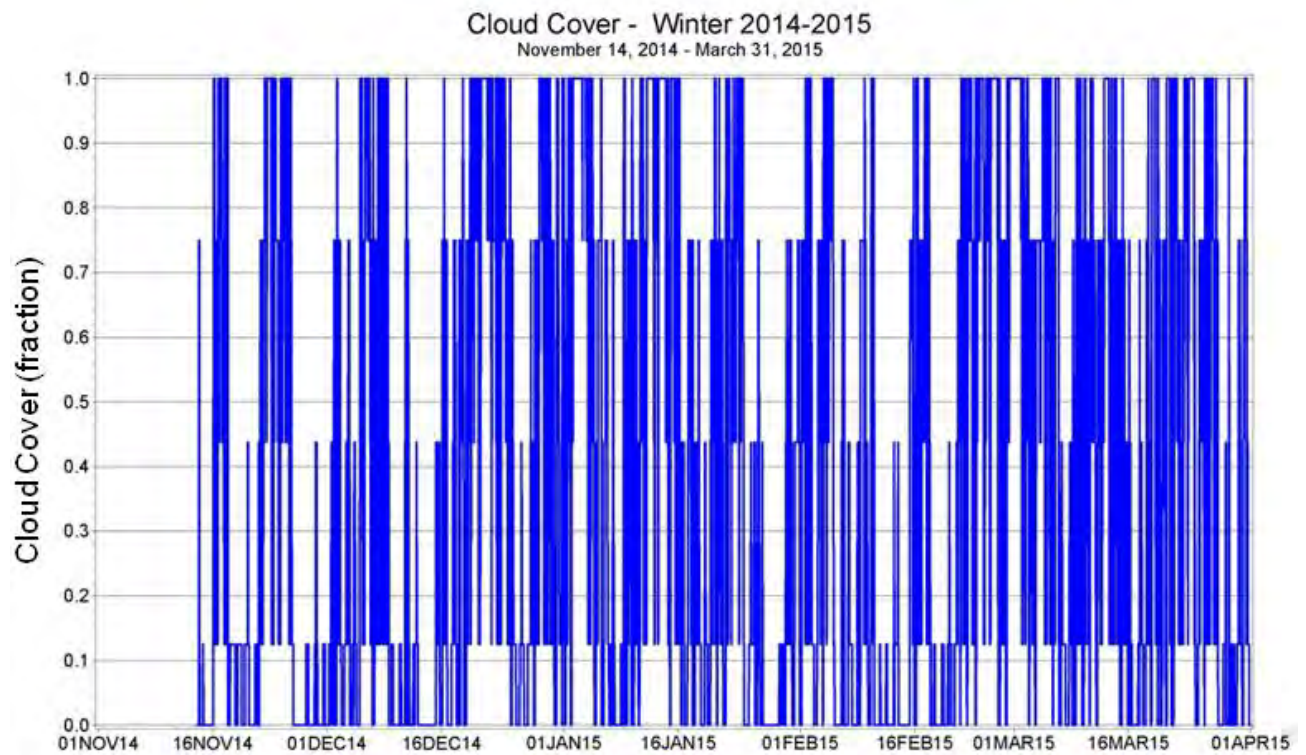


Figure A14. Cloud cover from Tallahassee NWS site November 14, 2014 - March 31, 2015.

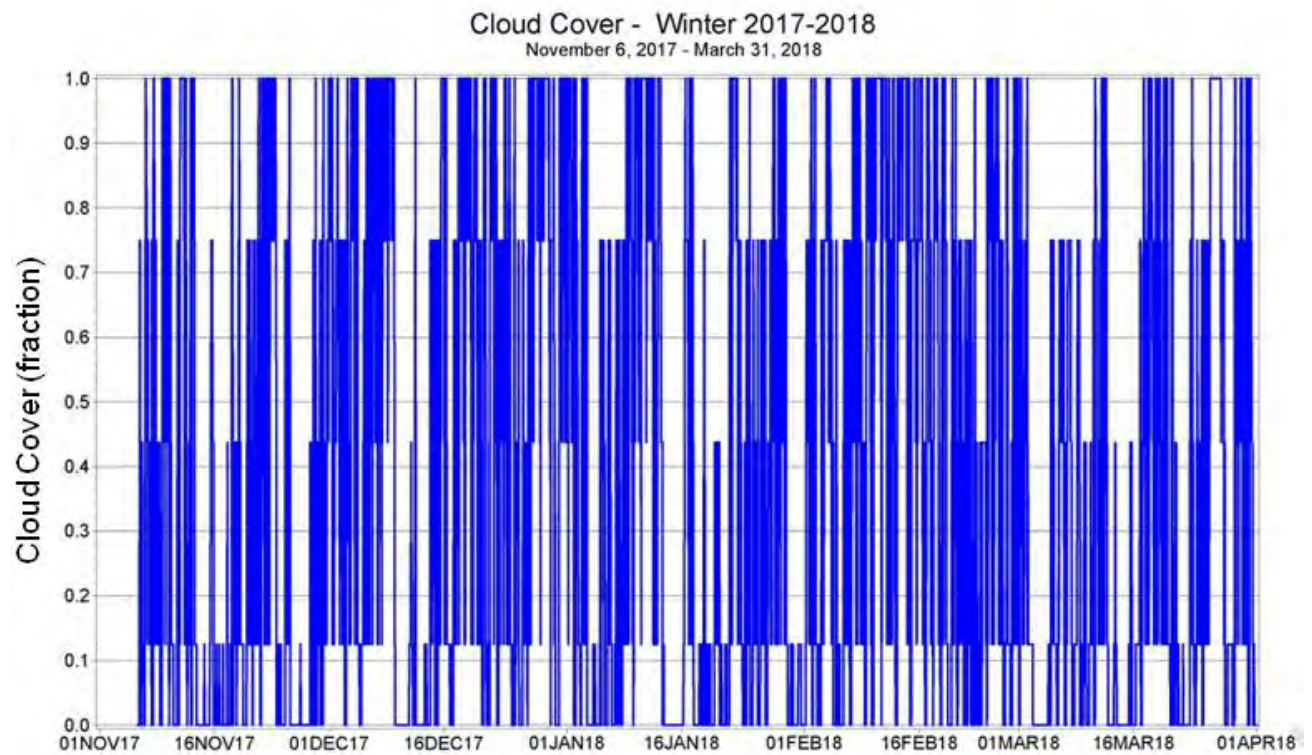


Figure A15. Cloud cover from Tallahassee NWS site November 6, 2017 - March 31, 2018.

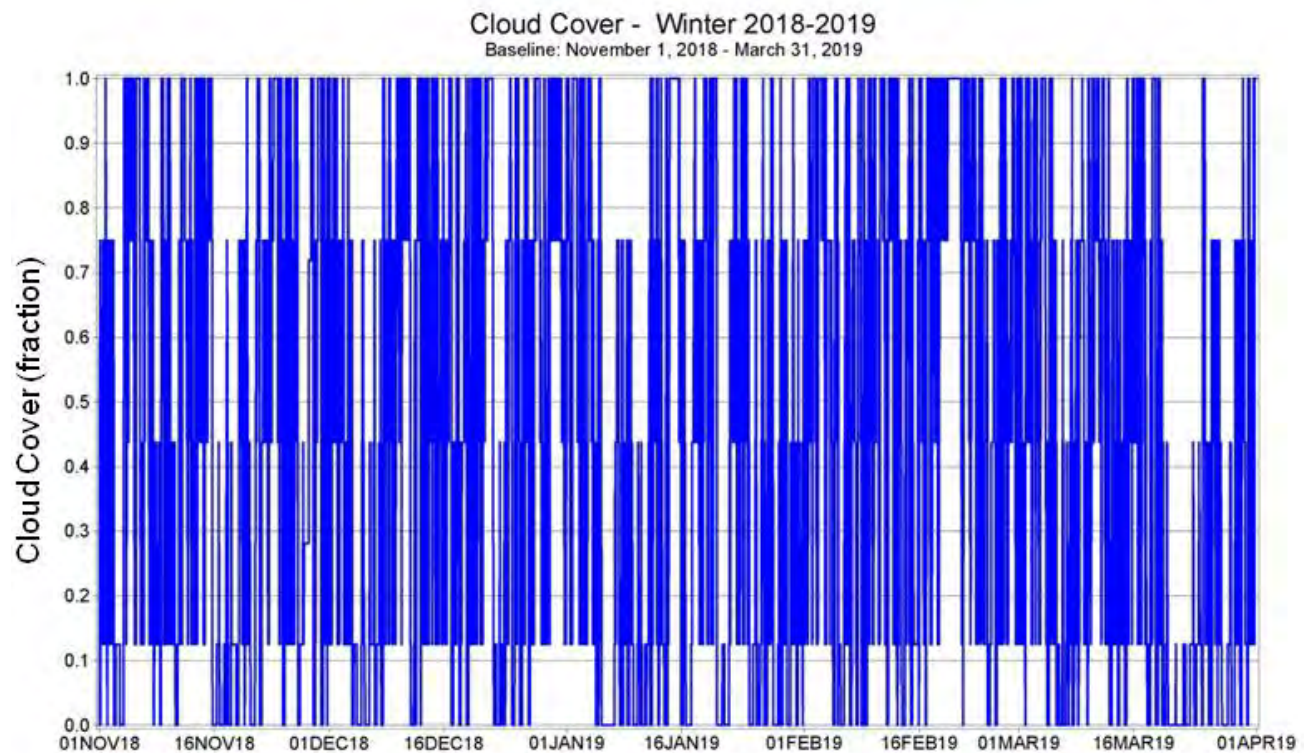


Figure A16. Cloud cover from Tallahassee NWS site November 1, 2018 - March 31, 2019.

Rainfall

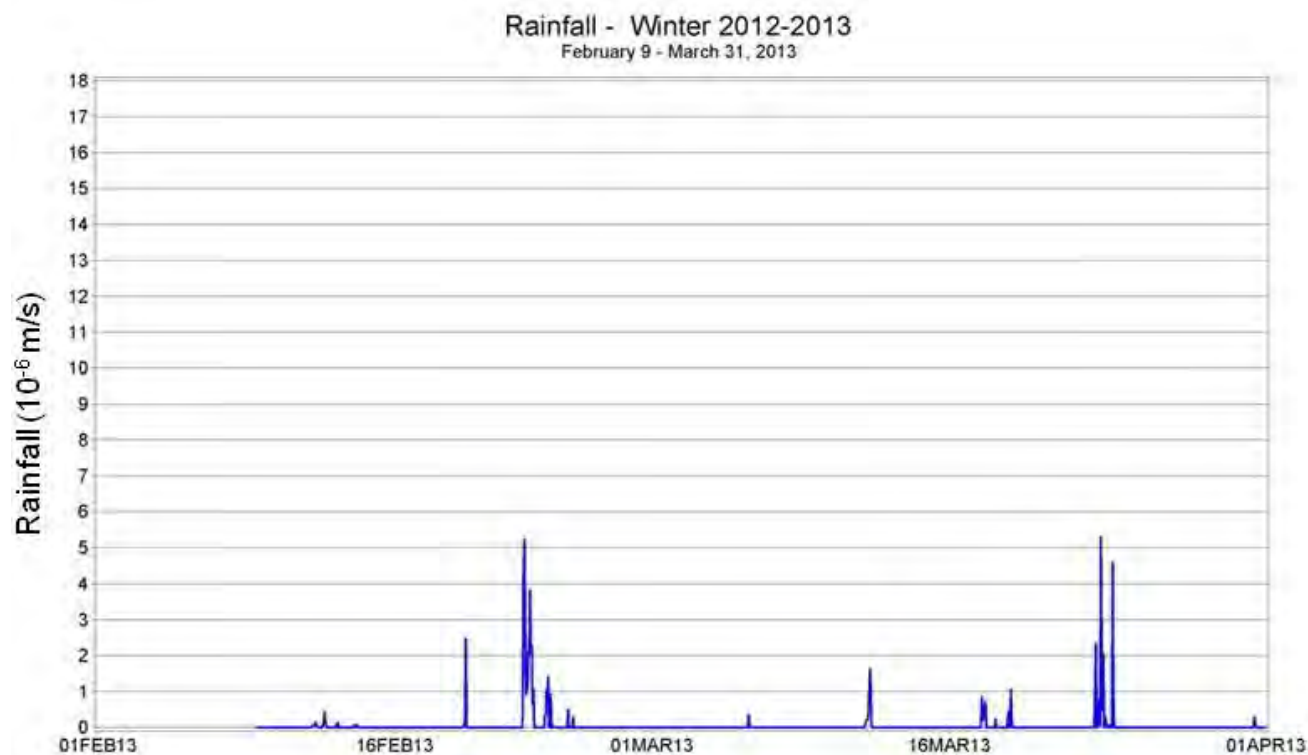


Figure A17. Rainfall from Tallahassee NWS site February 9 - March 31, 2013.

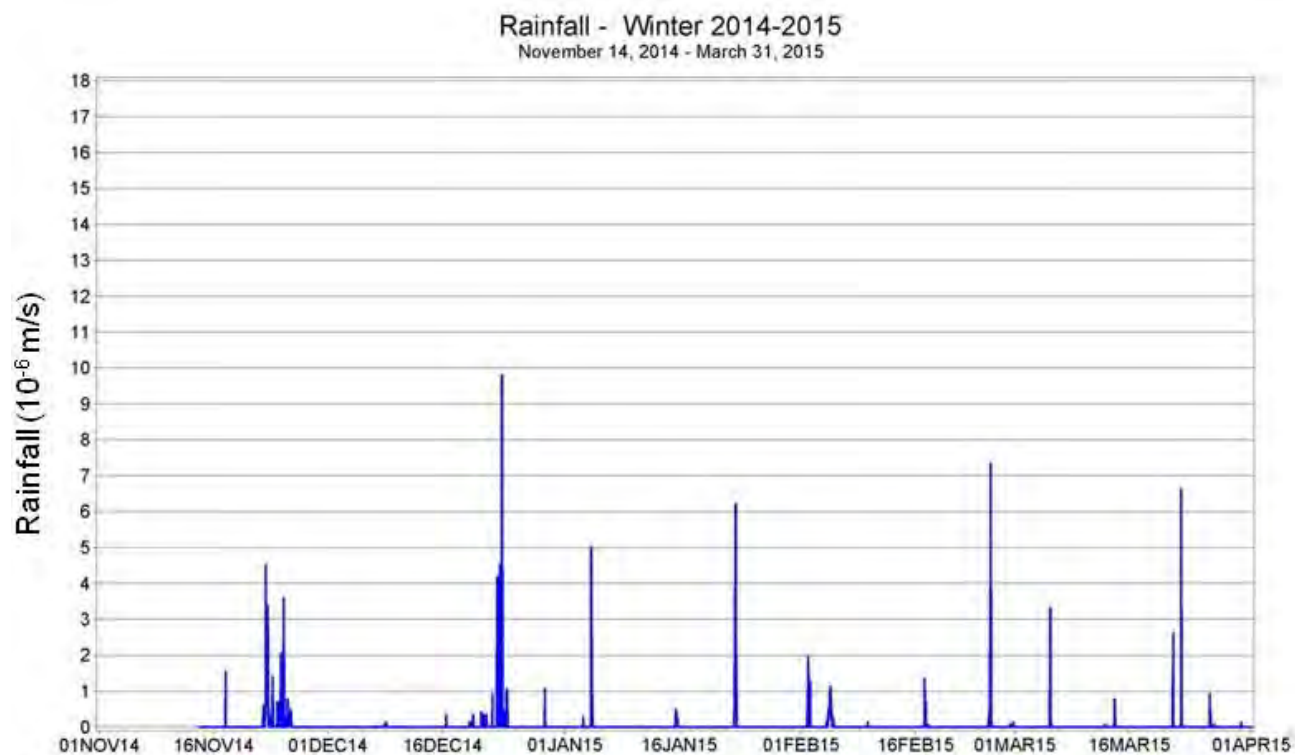


Figure A18. Rainfall from Tallahassee NWS site November 14, 2014 - March 31, 2015.

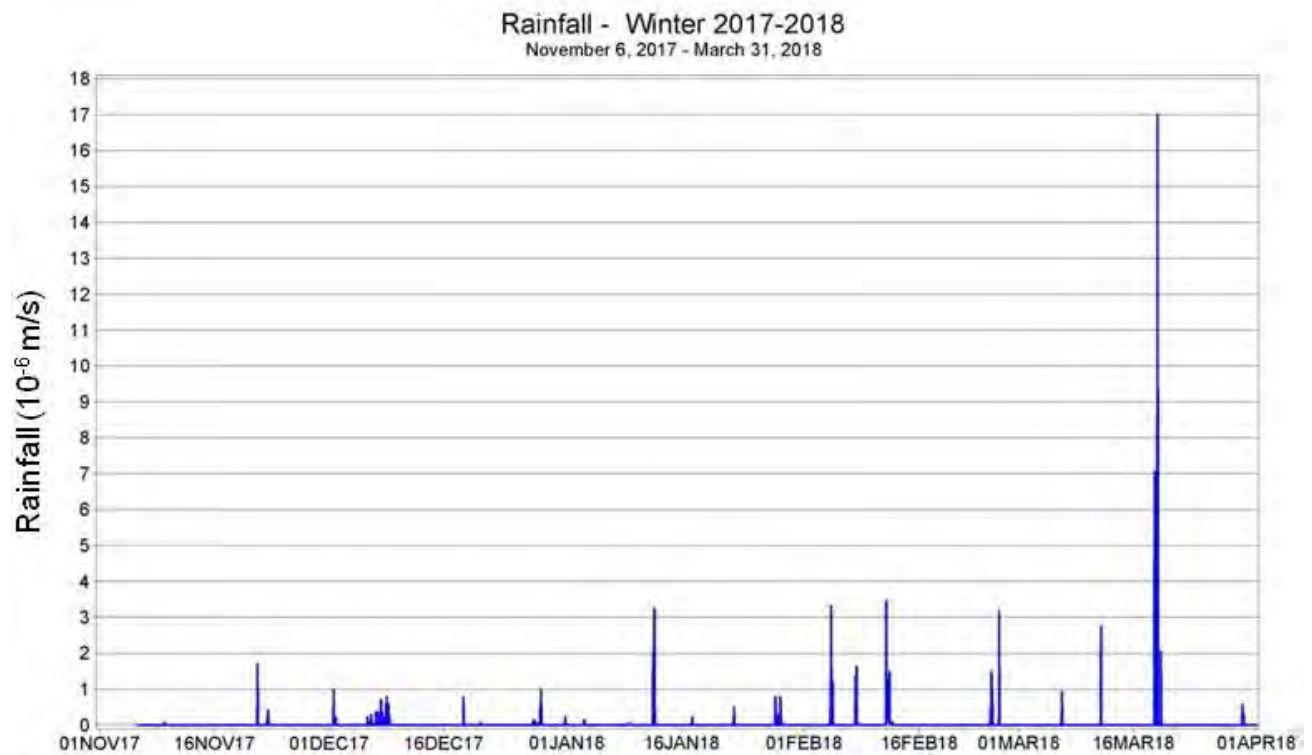


Figure A19. Rainfall from Tallahassee NWS site November 6, 2017 - March 31, 2018.

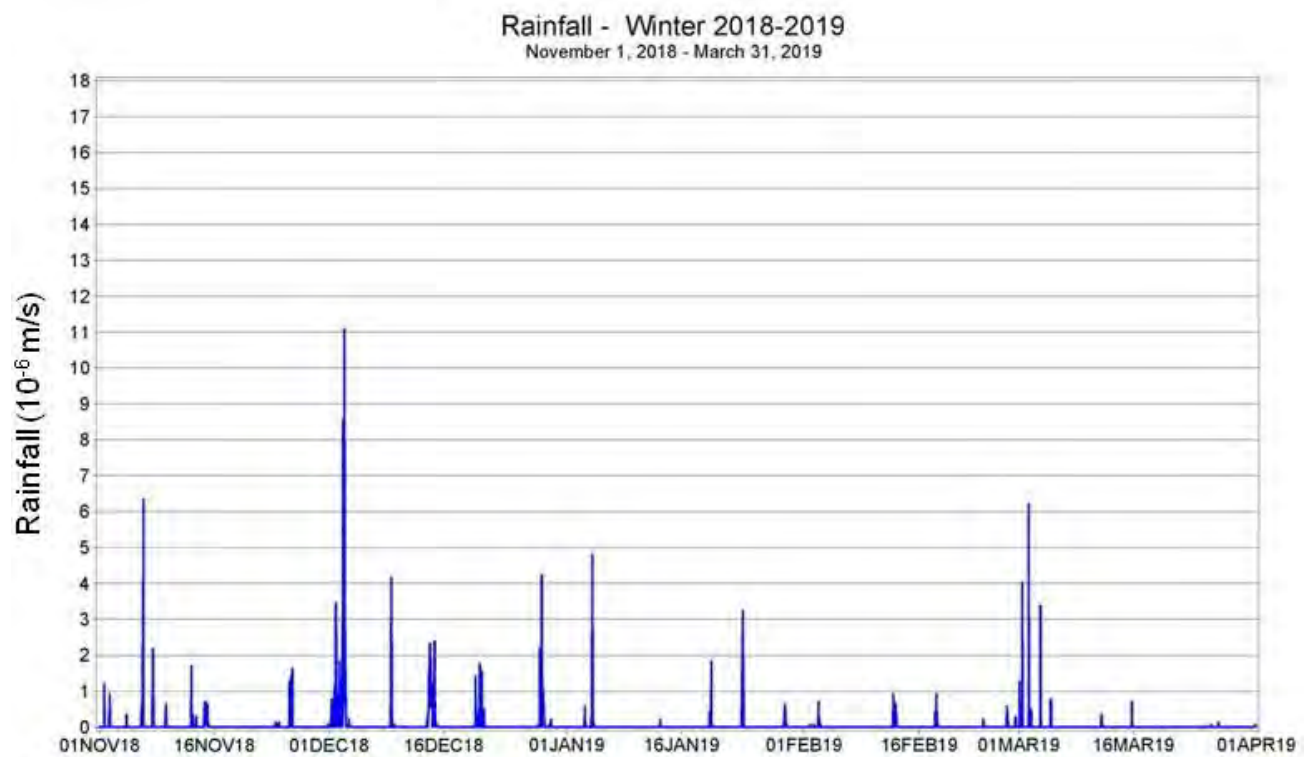


Figure A20. Rainfall from Tallahassee NWS site November 1, 2018 - March 31, 2019.

Solar Radiation

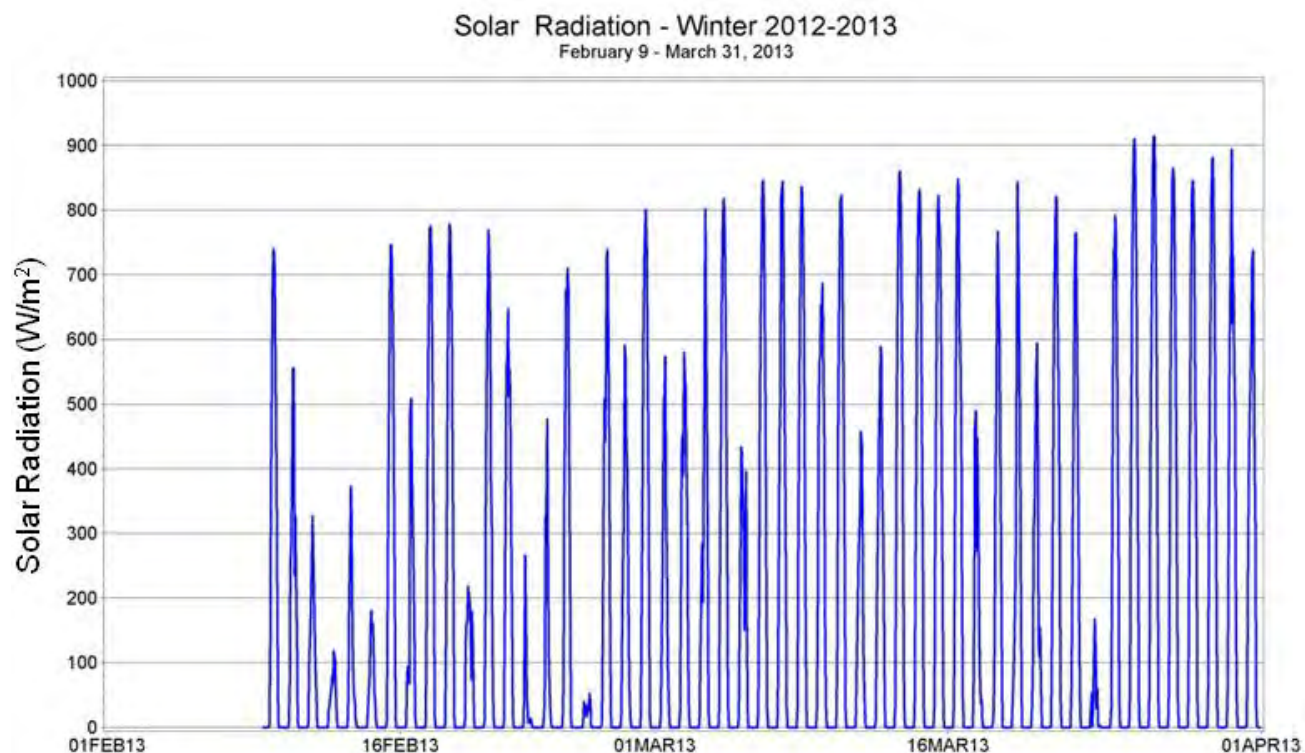


Figure A21. Solar radiation from Monticello IFAS FAWN site February 9 - March 31, 2013.

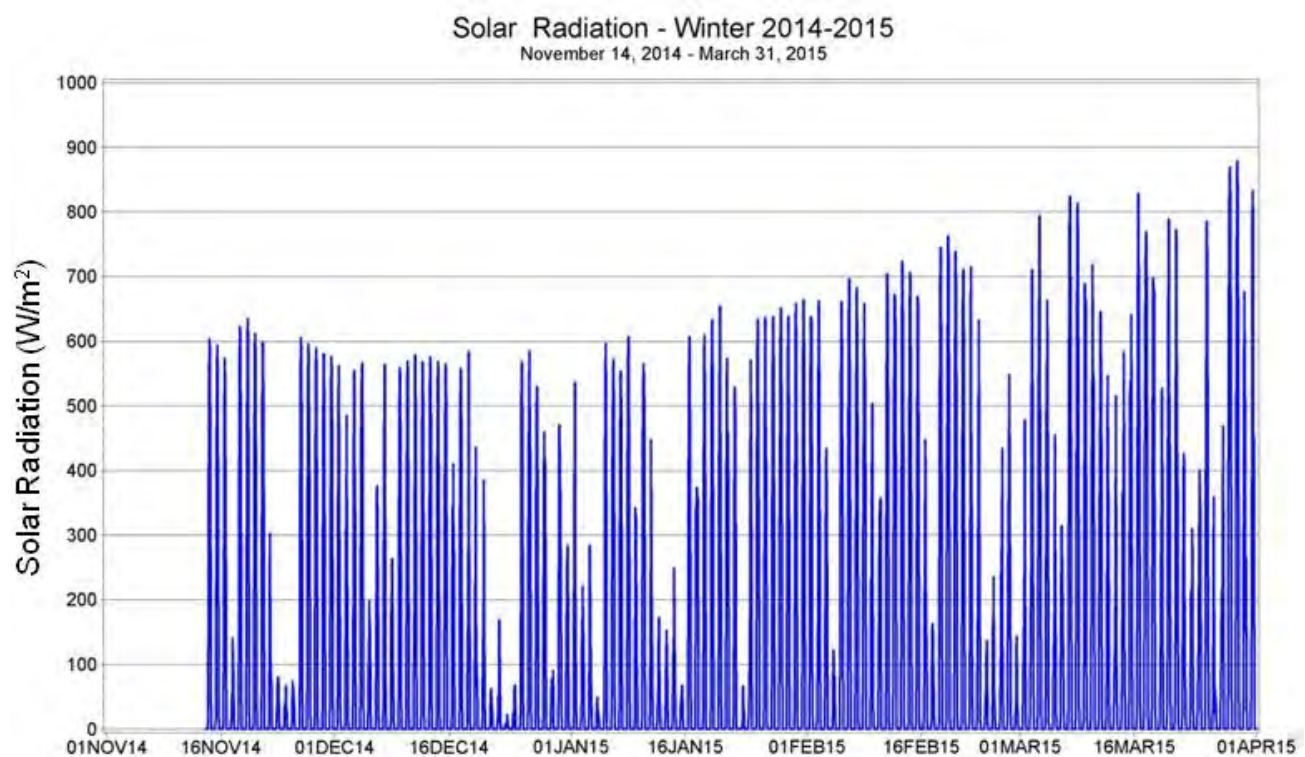


Figure A22. Solar radiation from Monticello IFAS FAWN site November 14, 2014 - March 31, 2015.

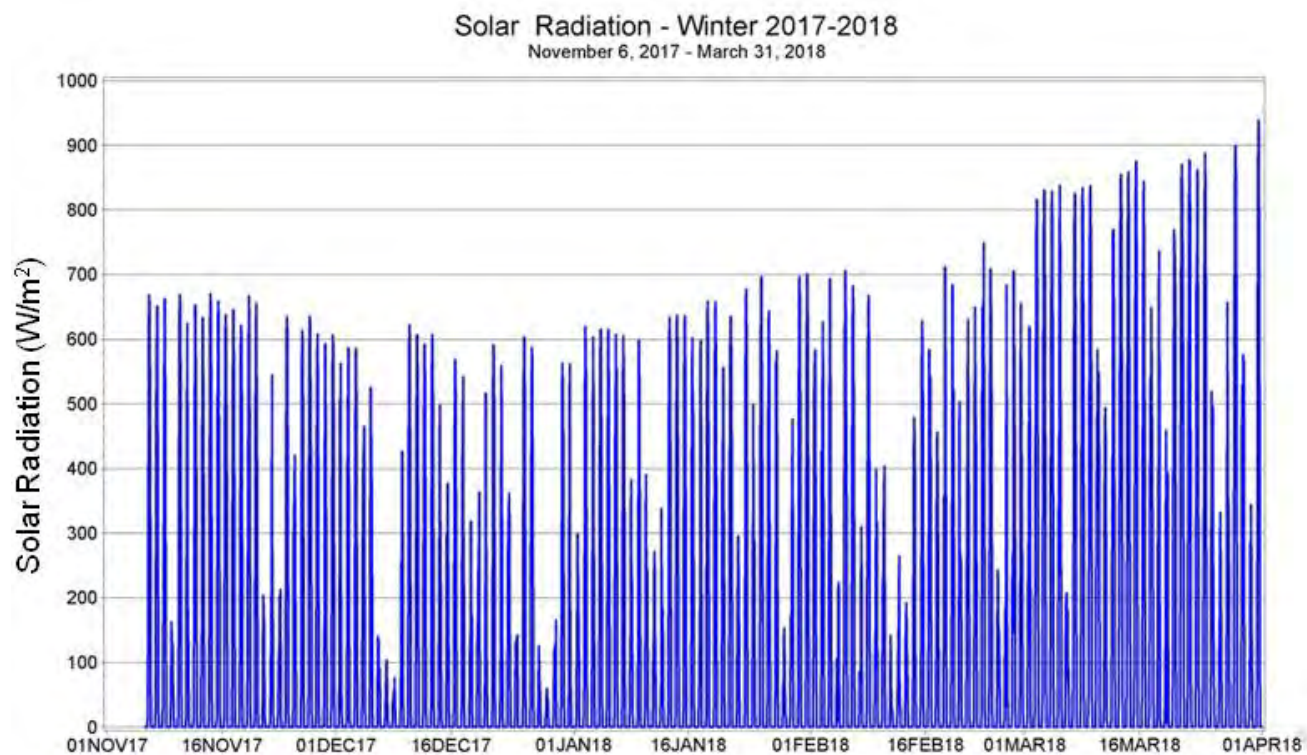


Figure A23. Solar radiation from Monticello IFAS FAWN site November 6, 2017 - March 31, 2018.

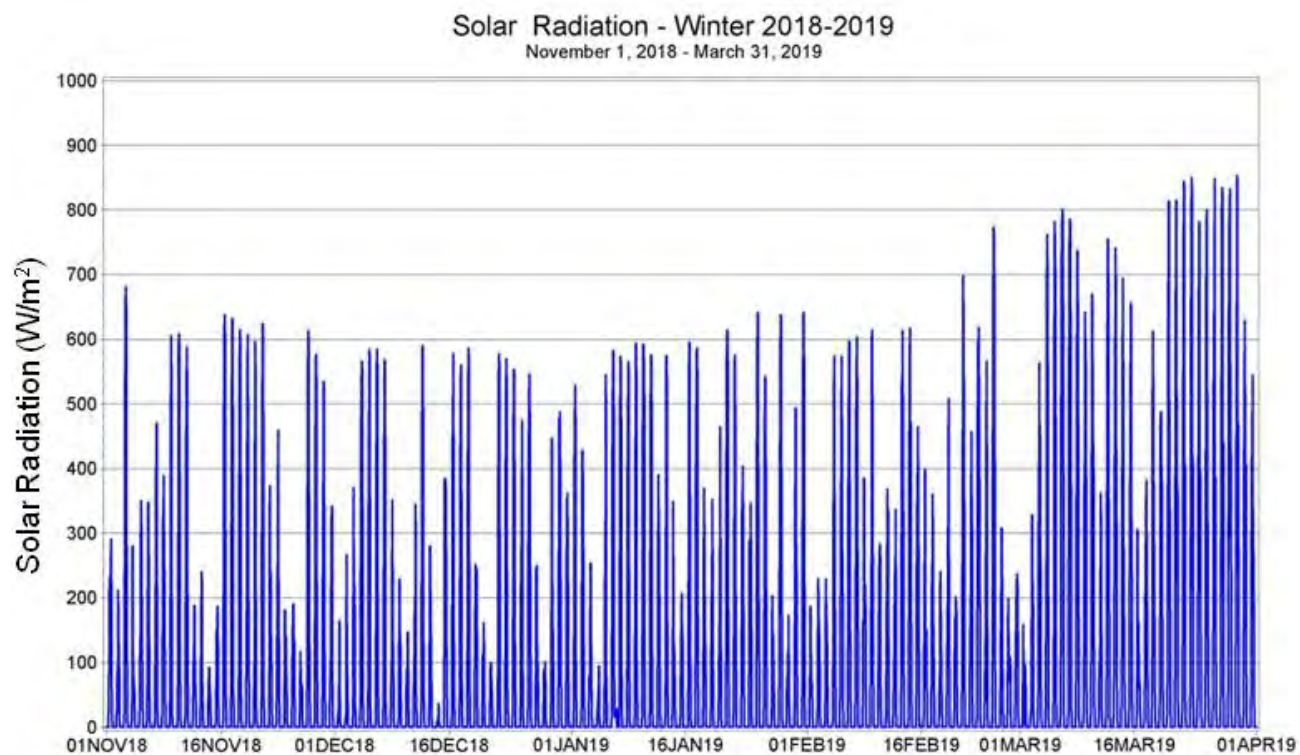


Figure A24. Solar radiation from Monticello IFAS FAWN site November 1, 2018 - March 31, 2019.

Evapotranspiration

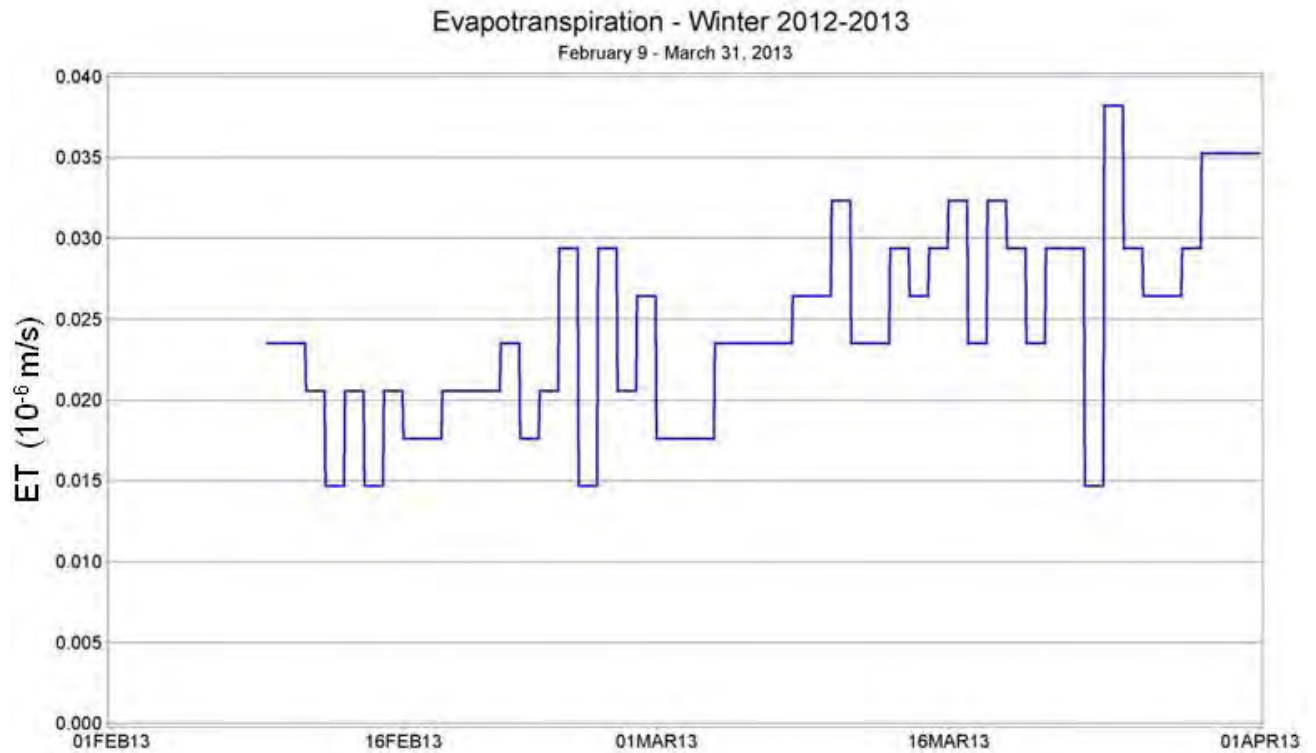


Figure A25. Evapotranspiration from Monticello IFAS FAWN site February 9 - March 31, 2013.

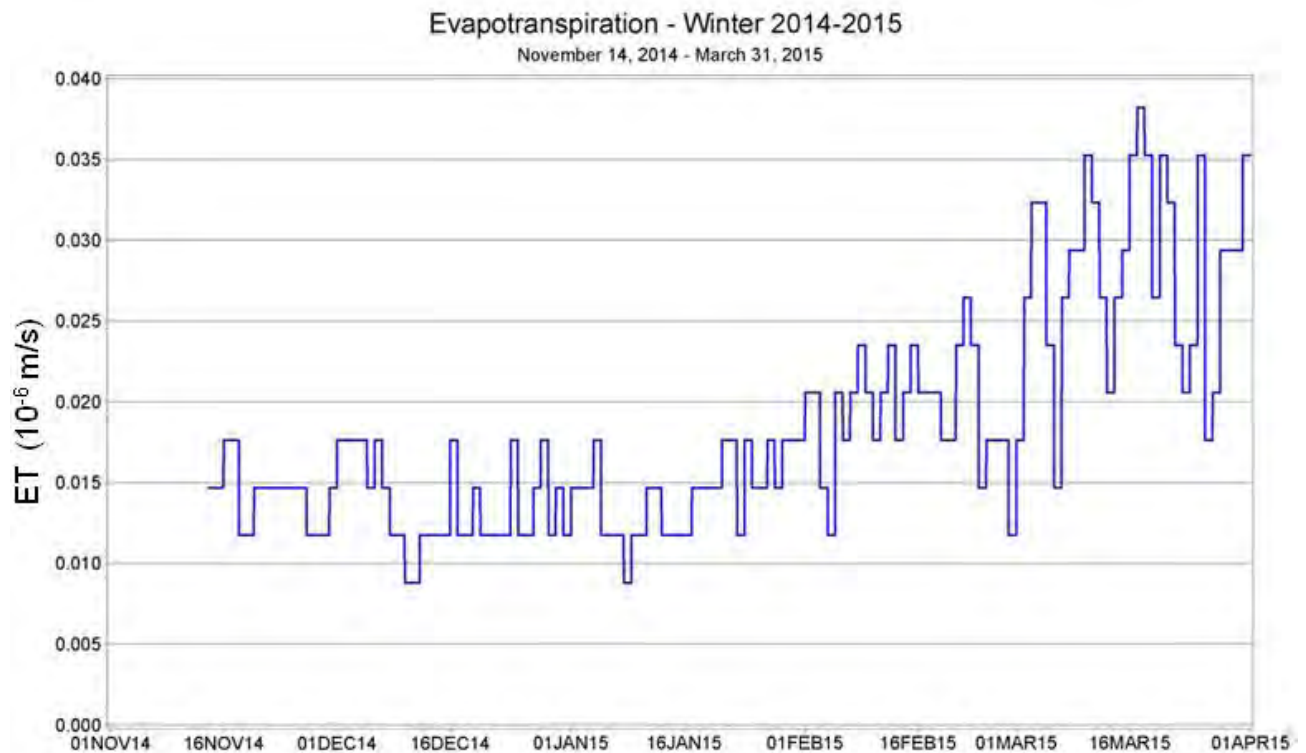


Figure A26. Evapotranspiration from Monticello IFAS FAWN site November 14, 2014 - March 31, 2015.

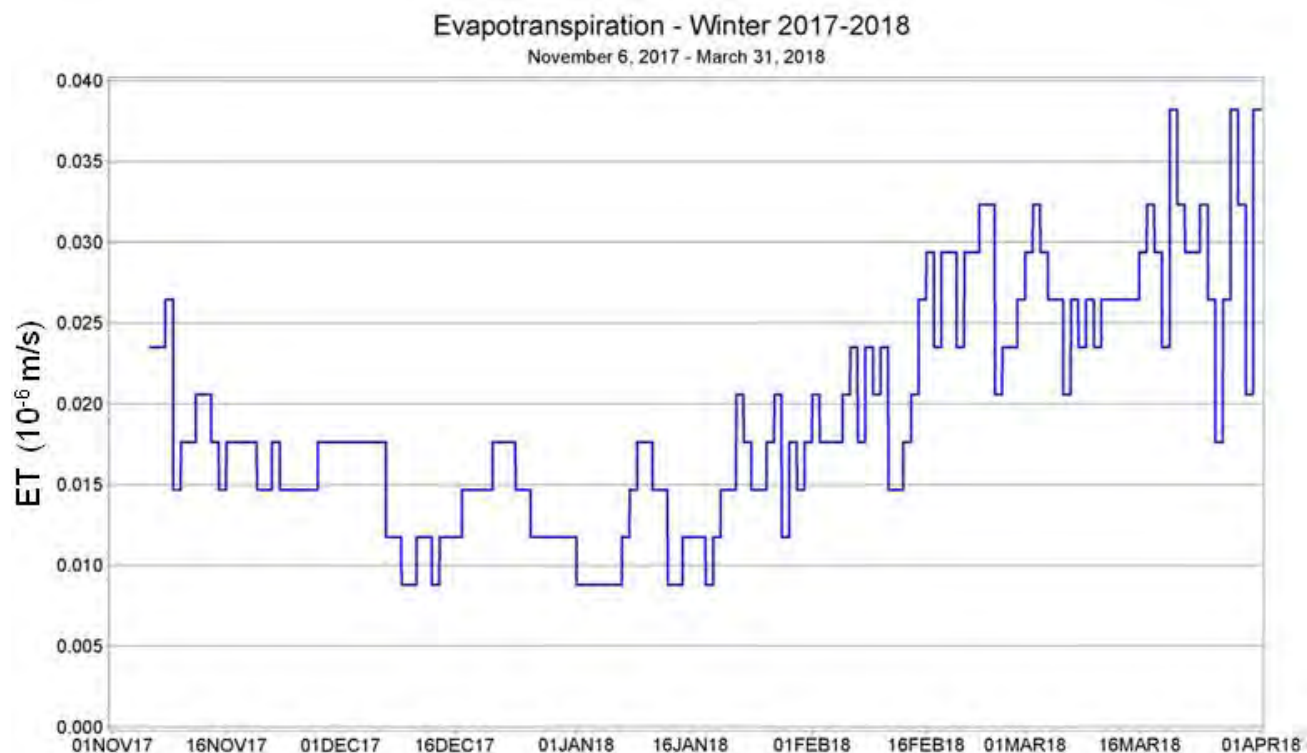


Figure A27. Evapotranspiration from Monticello IFAS FAWN site November 6, 2017 - March 31, 2018.

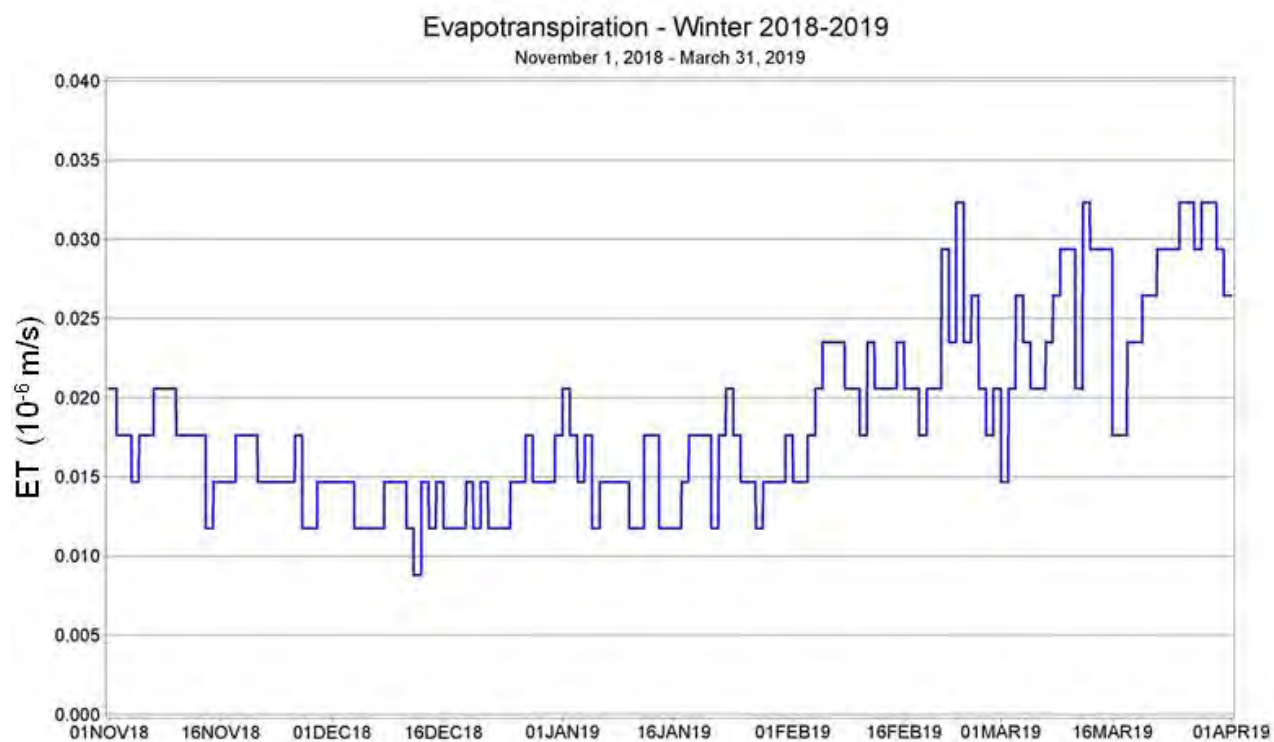


Figure A28. Evapotranspiration from Monticello IFAS FAWN site November 1, 2018 - March 31, 2019.

Wind Speed

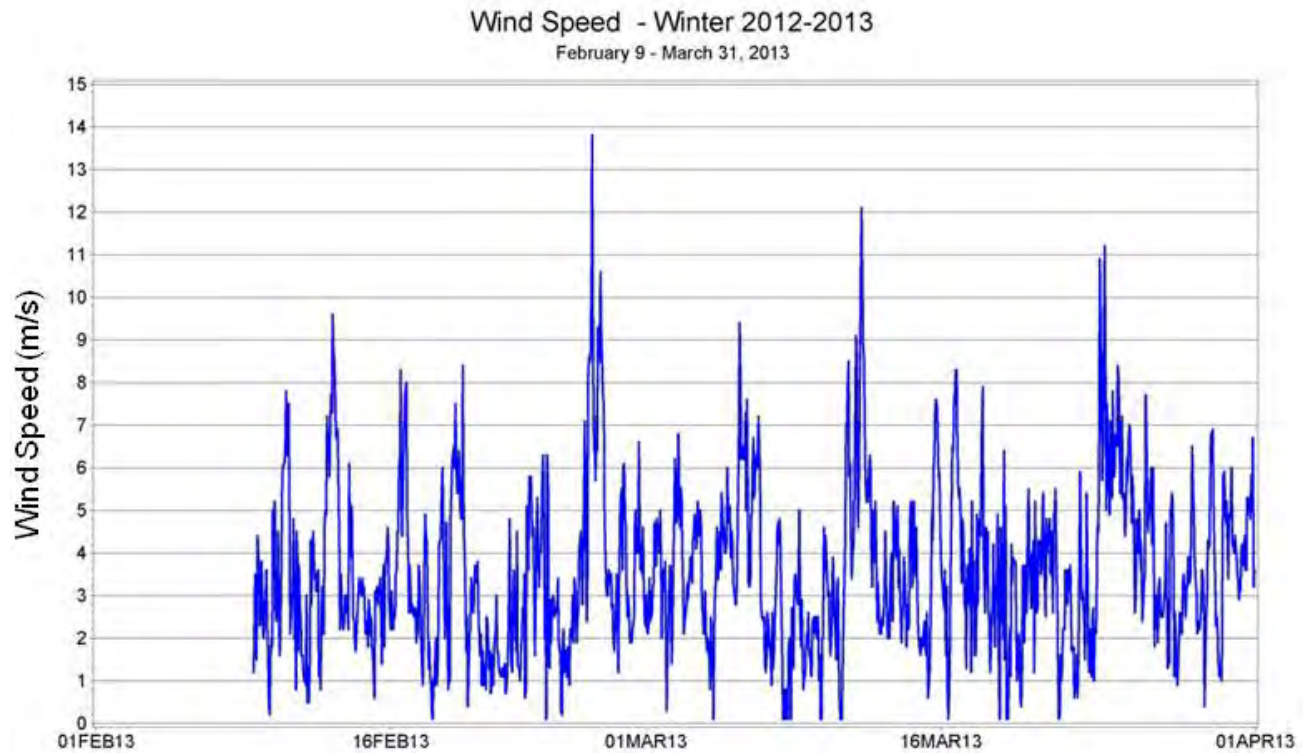


Figure A29. Wind speed from Shell Point USF COMPS site February 9 - March 31, 2013.

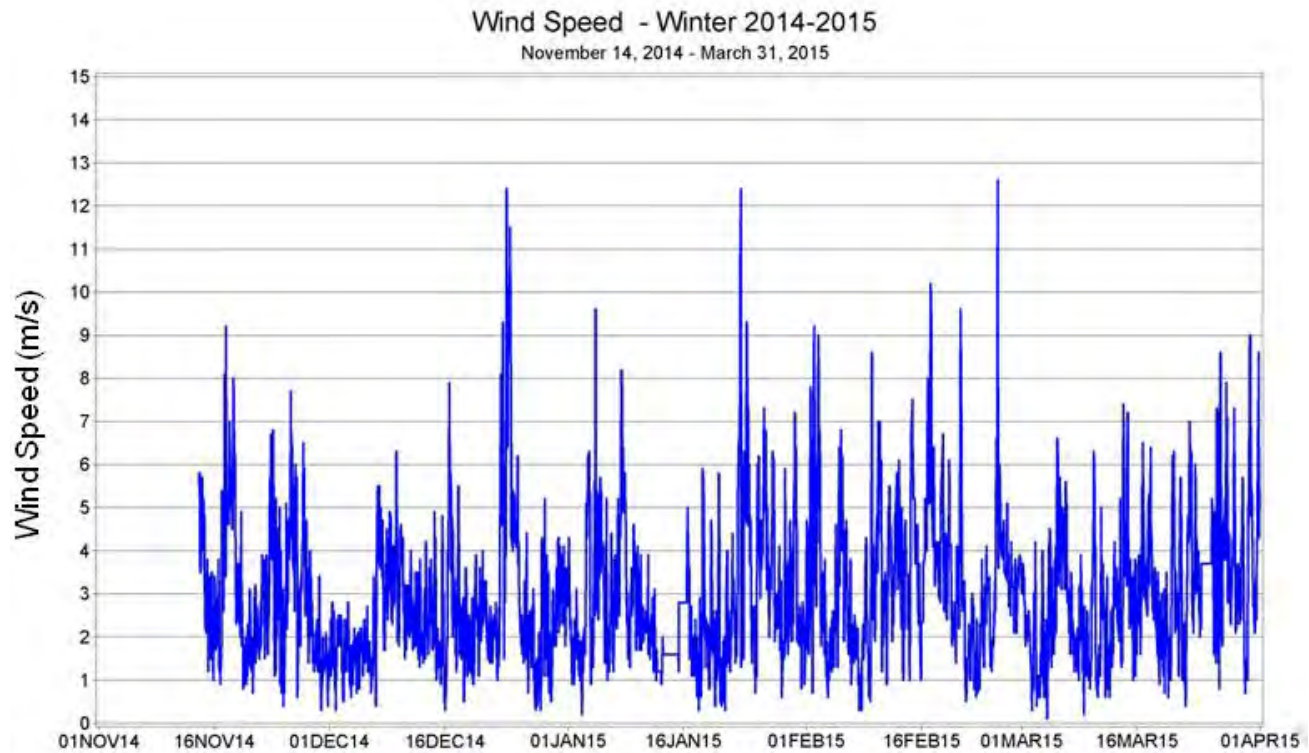


Figure A30. Wind speed from Shell Point USF COMPS site November 14, 2014 - March 31, 2015.

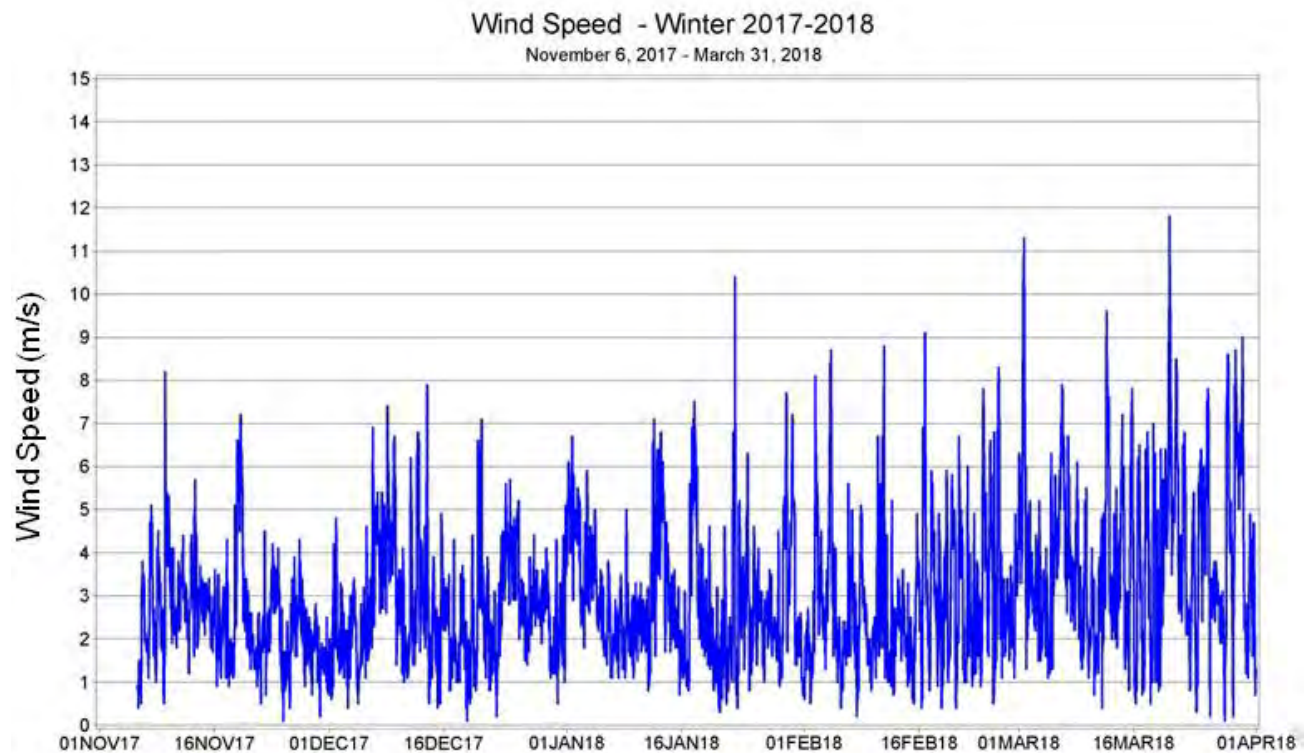


Figure A31. Wind speed from Shell Point USF COMPS site November 6, 2017 - March 31, 2018.

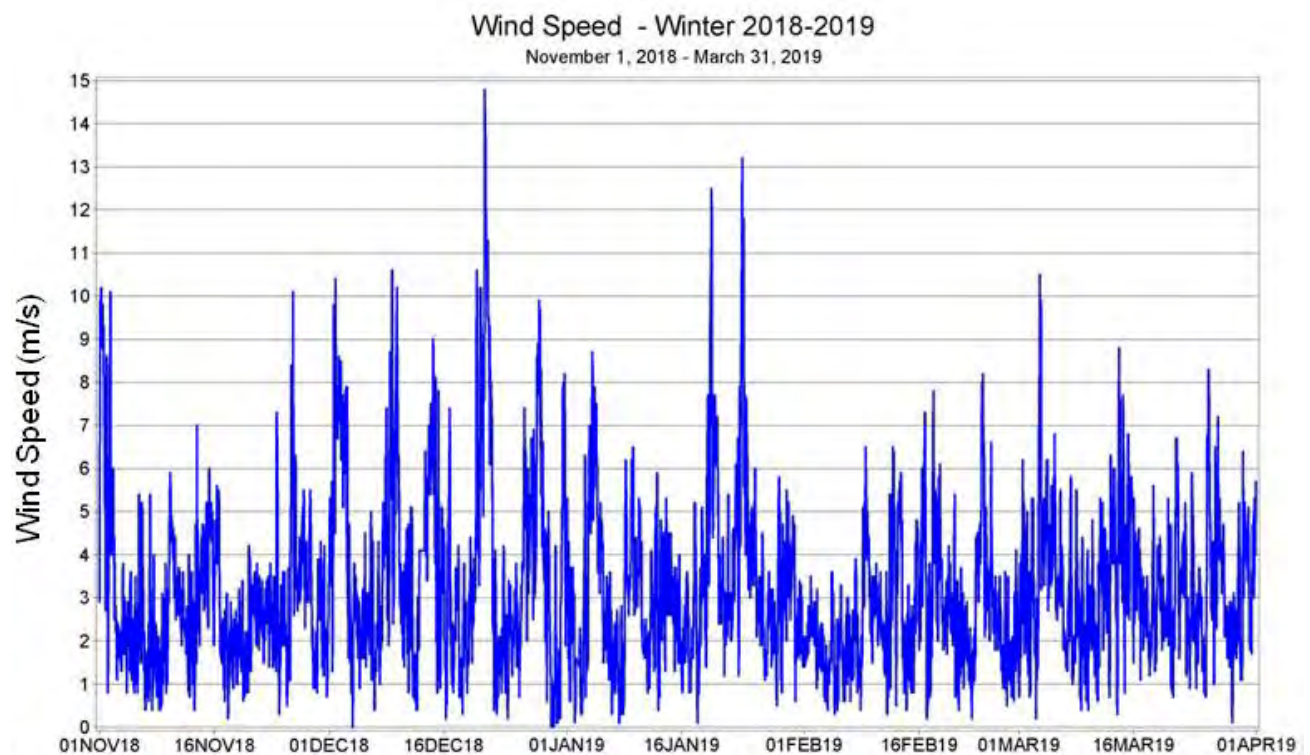


Figure A32. Wind speed from Shell Point USF COMPS site November 1, 2018 - March 31, 2019.

Wind Direction

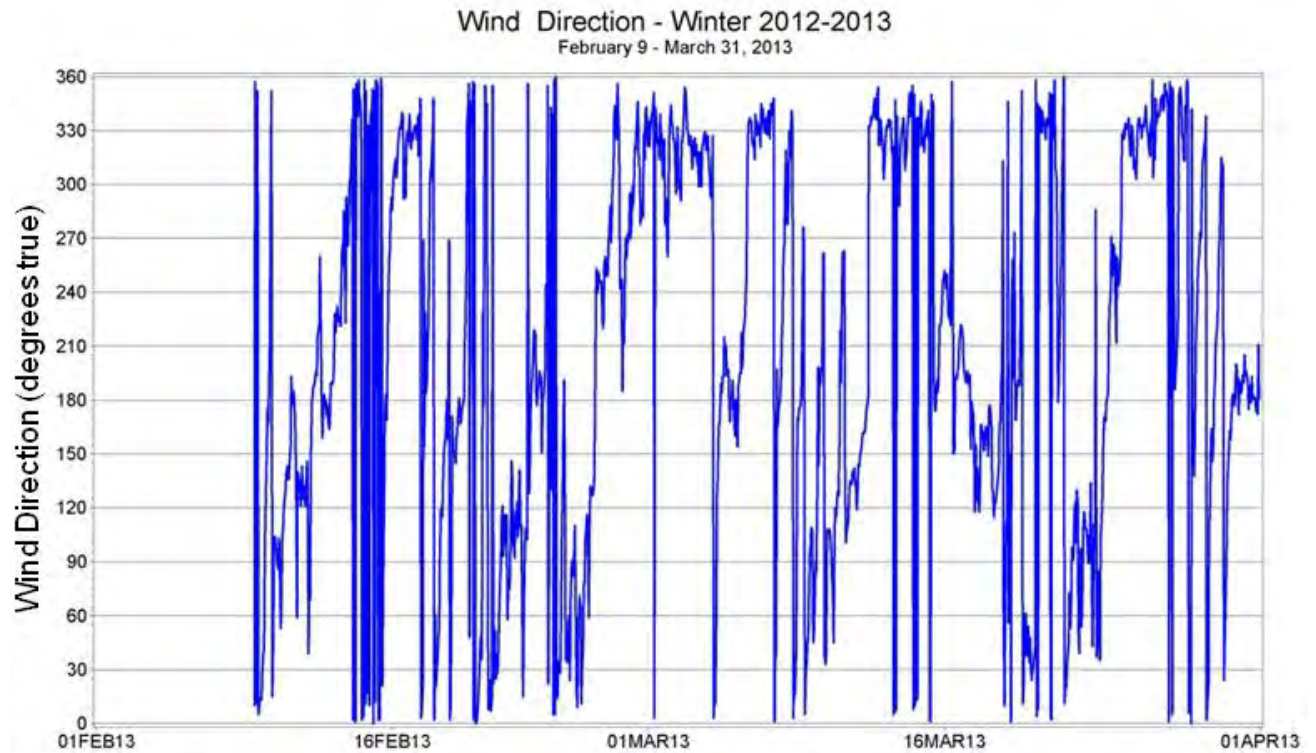


Figure A33. Wind direction from Shell Point USF COMPS site February 9 - March 31, 2013.

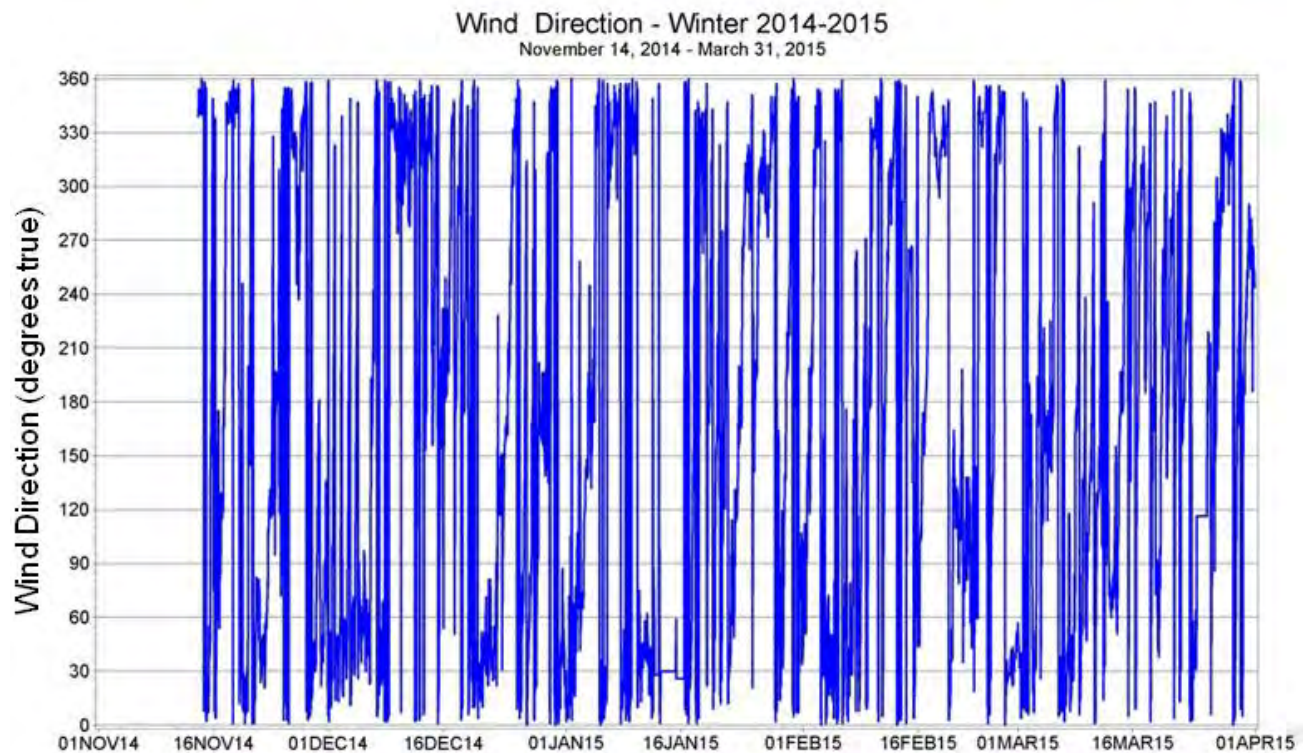


Figure A34. Wind direction from Shell Point USF COMPS site November 14, 2014 - March 31, 2015.

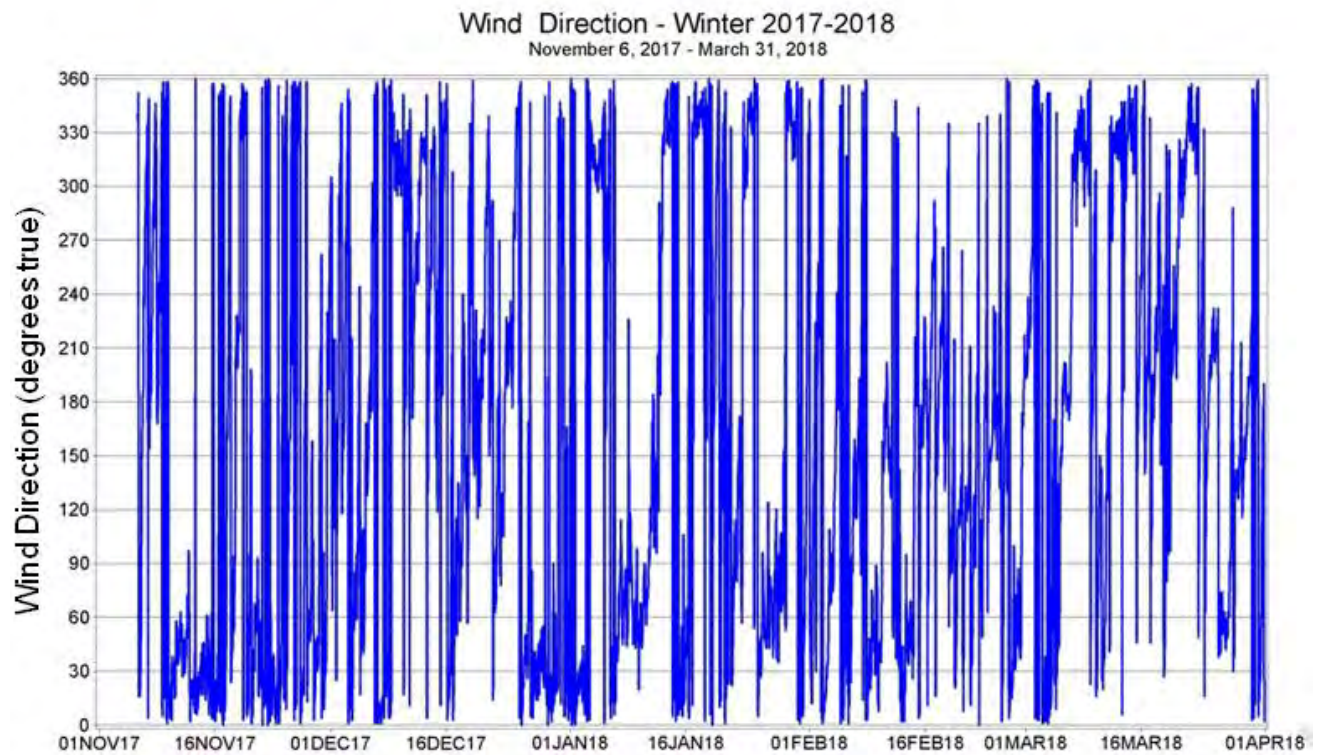


Figure A35. Wind direction from Shell Point USF COMPS site November 6, 2017 - March 31, 2018.

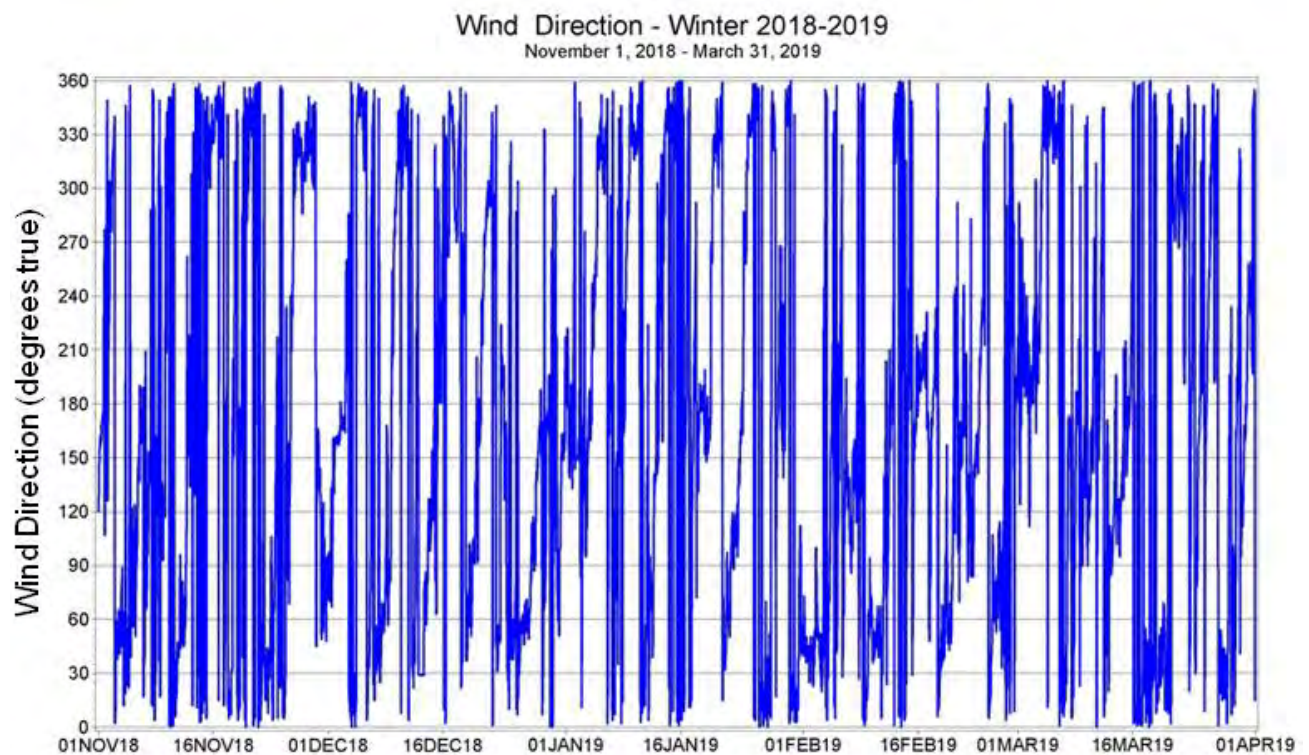


Figure A36. Wind direction from Shell Point USF COMPS site November 1, 2018 - March 31, 2019.