

FIGURE 2-1

GENERAL MAP FOR WATER USE PERMITTING

REF. SECTION 40A-2.902, F.A.C.
EFFECTIVE DATE: TBD

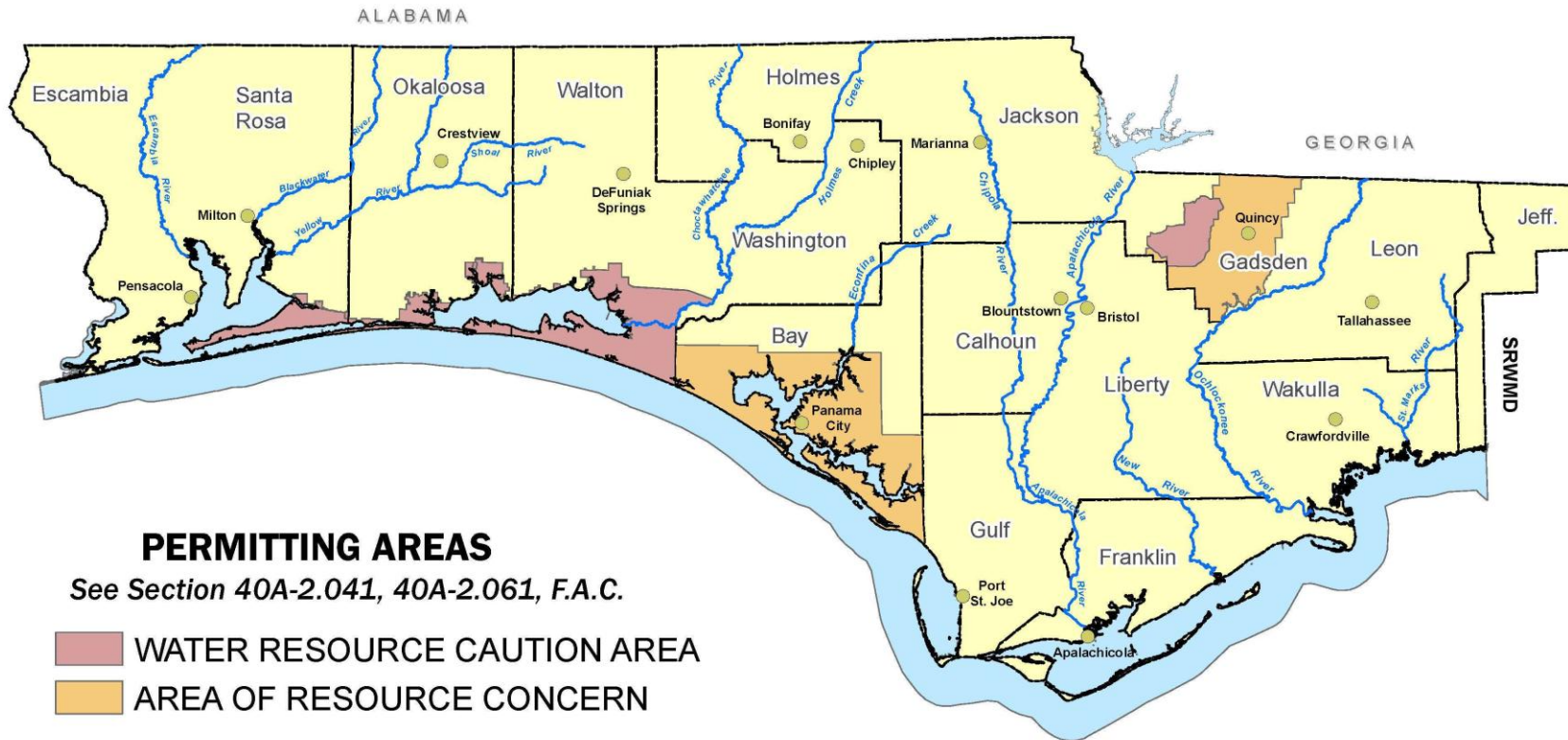
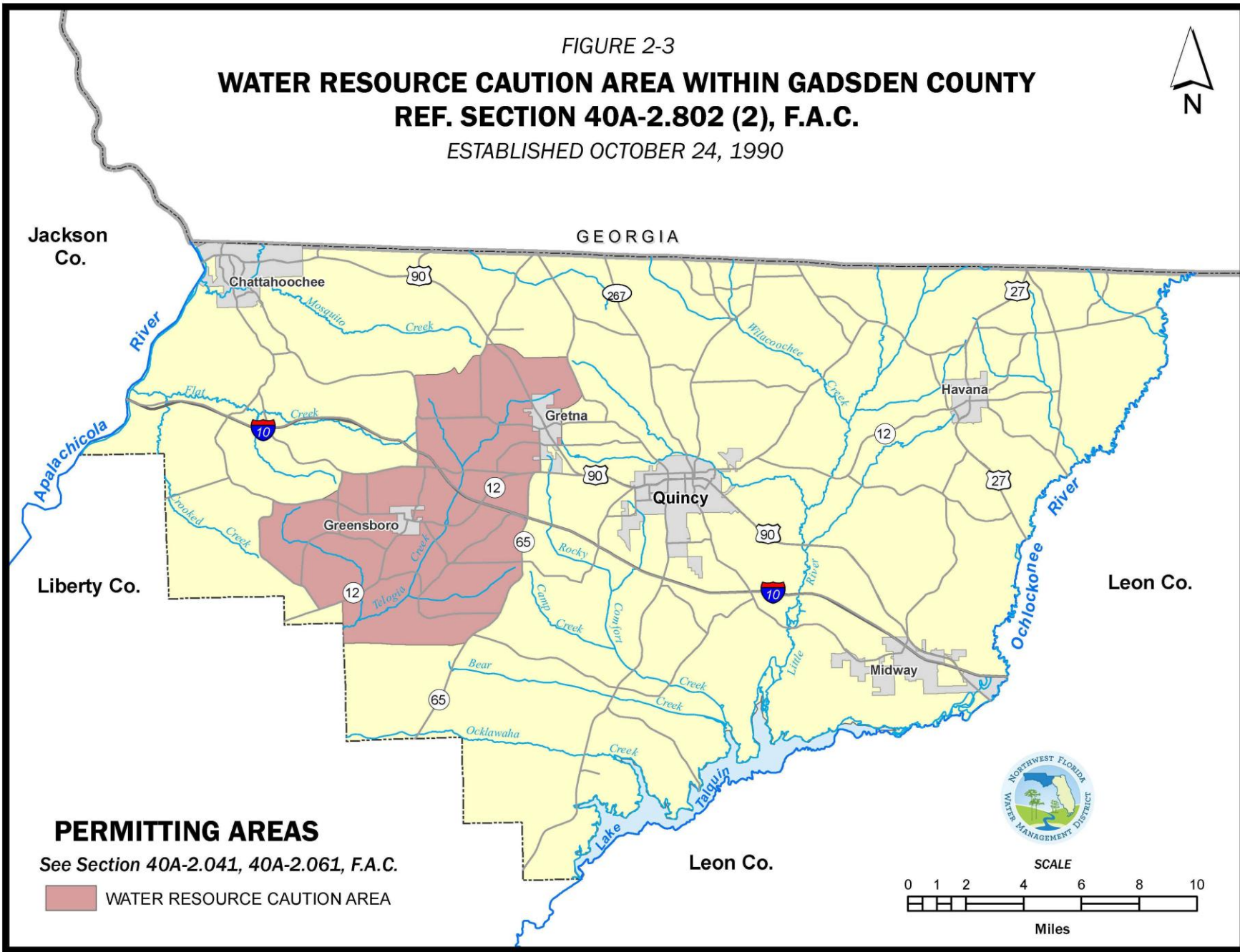




FIGURE 2-2
**WATER RESOURCE CAUTION AREA WITHIN REGION II
IN SANTA ROSA, OKALOOSA AND WALTON COUNTIES**
REF. SECTION 40A-2.802 (1), F.A.C.
ESTABLISHED AUGUST 1, 1989



FIGURE 2-3
WATER RESOURCE CAUTION AREA WITHIN GADSDEN COUNTY
REF. SECTION 40A-2.802 (2), F.A.C.
ESTABLISHED OCTOBER 24, 1990



PERMITTING AREAS

See Section 40A-2.041, 40A-2.061, F.A.C.

 WATER RESOURCE CAUTION AREA

